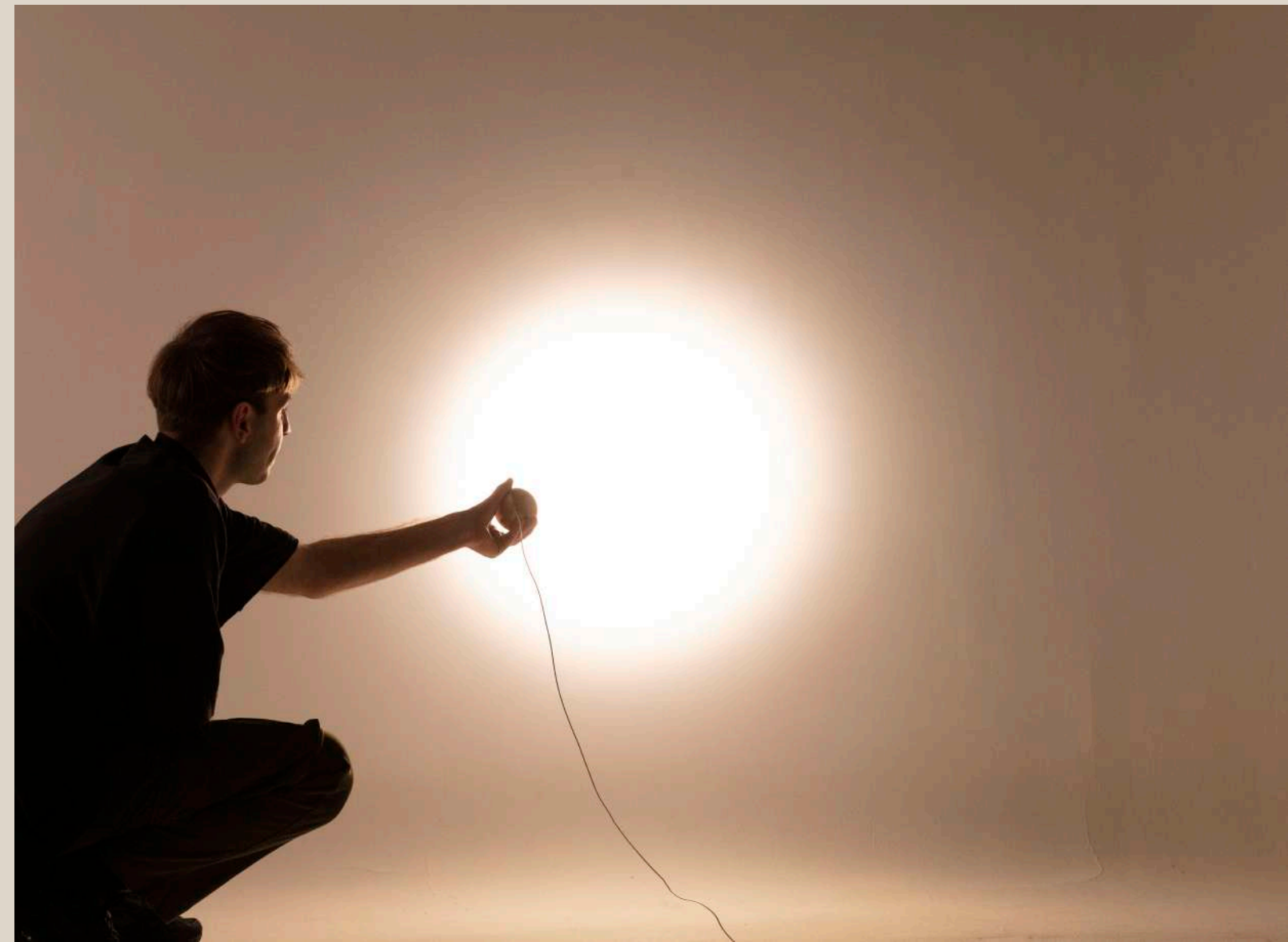


LOUPILIGHTING

Understand and achieve

We invent high quality lighting ranges with a strong identity, intended for the luxury markets, architecture and museography. Working with Loupi means dealing with a speed of understanding of the parameters defined by lighting designers, architects and an agility in solving complex subjects. Loupi has been working with light for a very long time, with the primary intention of producing devices designed with light designers, engineers and designers, the final product being made in France. We act outside the codes and highlight our vision of light with creations that sometimes go against the market, which then become benchmarks in the profession.



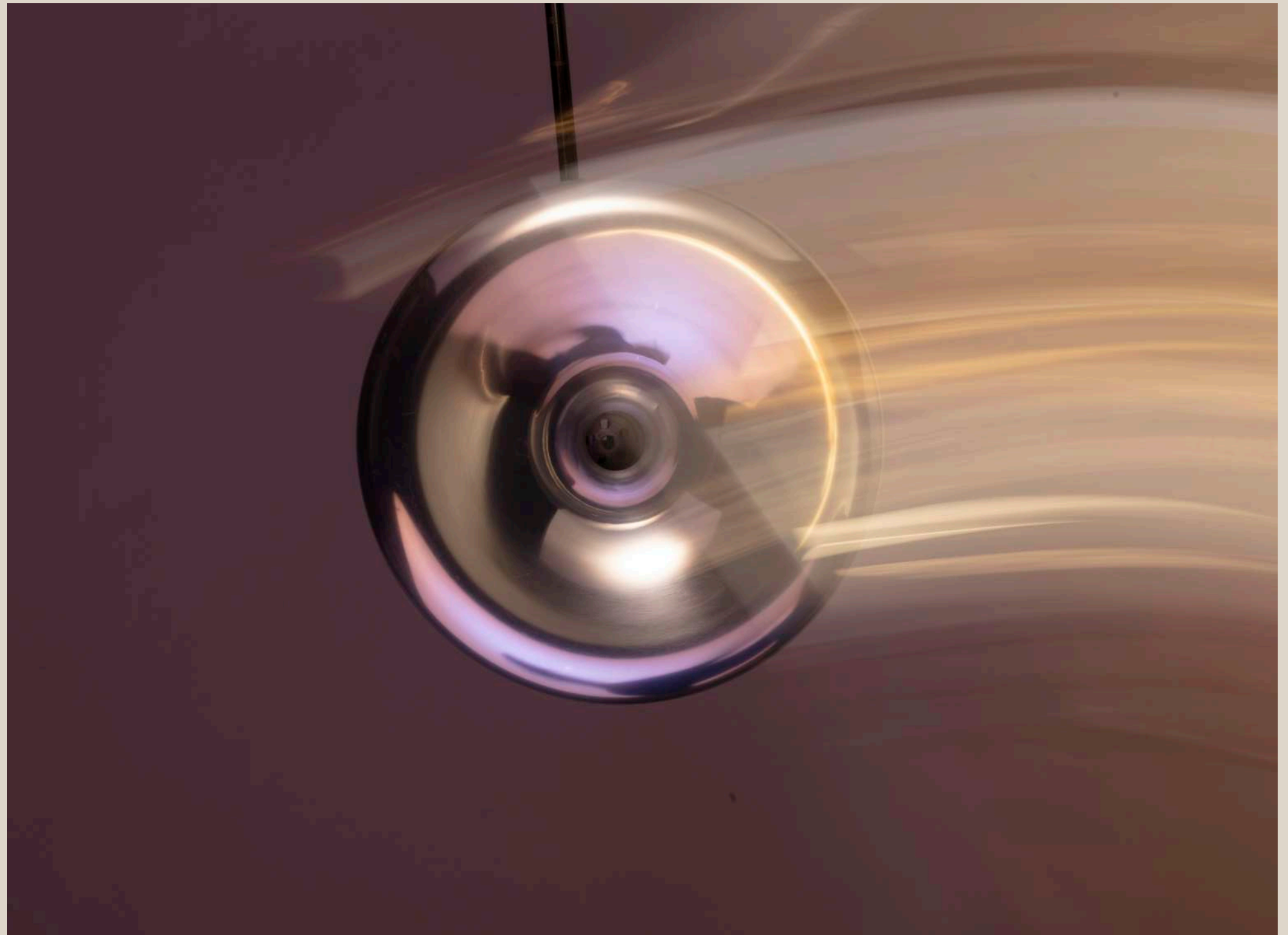


Design, technical, and manufacturing

In order to give shape to your project before its manufacture, our team of engineers and designers takes care of all the technical study. When you entrust us with your idea, we establish together the feasibility and the costs of the project. At Loupi, everything is made in France, within short deadlines and with particular attention paid to each project.

Special projects

Each new project requires designing unique lights, thinking up objects that do not yet exist. At Loupi, we know how to respond to this type of request quickly and efficiently. We have a strong capacity for innovation. Our R&D office brings together electronics engineers, industrial engineers and designers who know how to meet your needs and invent intelligent solutions.



track	13
-------	----

mast	33
------	----

spot	43
------	----

outdoor	63
---------	----

reccessed	71
-----------	----

rca	83
-----	----

linear	97
--------	----

track



SPOT D10
PICCOLO

OPTICAL

FRAMER
Luminous flux according to Bining: variable focal length
Adjustable focus : 10° à 35° (glass)
INTERCHANGEABLES LENSES
Luminous flux according to Bining : up to 5000cd
Degrees: 10°, 15°, 40° et ELL (PMMA)
ZOOM
Luminous flux according to Bining : 3000 to 15000 cd max
Adjustable focus : 8° to 30° (glass)

Colour temperature: 2700 K to 4000 K
Service Range: 70 % of nominal flux after 50 000 hours;
Colour Rendering Index : CRI 90, CRI 95 (on demand).

MECHANICAL

FRAMER
GOBO and filter holder
Accessory length : 105mm

Diameter of spot : 50mm.
Articulated joint
Operating temperature: -5° +40°;
ROHS components;
Interior use only.

ELECTRICAL

24V constant current supply.
Luminaire electrical power up to 10W.

NORMS



SPECIFICITIES

Electrolytic treatment available.
3 years guarantee.

COLORS



SPOT
D15
SLIM

OPTICAL

Luminous flux according to Bining : 1500/1200 lumens.
Colour temperature : 2700 K to 4000 K (on 2 to 3 Macadam steps).
Service Range : 70 % of nominal flux after 50 000 hours.
Colour Rendering Index : CRI 90.
PMMA acrylic lens, efficiency ~90 %.
Interchangeable lens.
Available degrees : 10°, 15°, 25°, 35° et ELL.

ELECTRICAL

Constant supply voltage 24V.
Electric transmission by magnetic contact.
Reversible polarity and hot plug.
Power consumption to 18W max.
Electrical Classification : Class III SELV device.

MECHANICAL

Spot diameter : 55mm.
Electronic circuit encased in a fire proof polycarbonate housing.
Material : Aluminium (Spot & Slim Track).
Articulating base.
Operating temperature : -5° +40°.
ROHS components.
Interior use only.

NORMS



SPECIFICITIES

3 years guarantee.

COLORS





**SPOT
D12
SLIM**

OPTICAL

Luminous flux according to Bining : 1200/1000 lumens.
Colour temperature : 2700 K to 4000 K (on 2 to 3 Macadam steps).
Service Range : 70 % of nominal flux after 50 000 hours.
Colour Rendering Index : CRI 90.
PMMA acrylic lens, efficiency ~90 %.
Interchangeable lens.
Available degrees : 15°, 25°, 40°, 50° et ELL.

ELECTRICAL

Constant supply voltage 24V.
Electric transmission by magnetic contact.
Reversible polarity and hot plug.
Power consumption to 14.5W max.
Electrical Classification : Class III SELV device.

MECHANICAL

Spot diameter : 45mm.
Electronic circuit encased in a fire proof polycarbonate housing.
Material : Aluminium (Spot & Slim Track).
Articulating base.
Operating temperature : -5° +40°.
ROHS components.
Interior use only.

NORMS



SPECIFICITIES

3 years guarantee.

COLORS



**SPOT
D8
SLIM**

OPTICAL

Luminous flux according to Bining : 800/600 lumens.
Colour temperature : 2700 K to 4000 K (on 2 to 3 Macadam steps).
Service Range : 70 % of nominal flux after 50 000 hours.
Colour Rendering Index : CRI 90.
PMMA acrylic lens, efficiency ~90 %. Interchangeable lens.
Available degrees : 15°, 25°, 40° & ELL.

ELECTRICAL

Constant supply voltage 24V.
Electric transmission by ball contact.
Reversible polarity and hot plug.
Power consumption to 9.6W max.
Electrical classification : Class III SELV device.

MECHANICAL

Spot diameter : 45mm.
Electronic circuit encased in a fire proof polycarbonate housing.
Material : Aluminium (Spot & Slim Track).
Articulating base.
Operating temperature : -5° +40°.
ROHS components.
Interior use only.

NORMS



SPECIFICITIES

3 years guarantee.

COLORS





SPOT D
SLIM

OPTICAL

Luminous flux according to Bining : 300/250 lumens.
Colour temperature : 2400 K to 5000 K.
Service Range : 70 % of nominal flux after 50 000 hours.
Colour Rendering Index : CRI 90.
PMMA acrylic lens, efficiency ~90 %.
Interchangeable lens.
Available degrees : 10°, 18°, 28°, 40° et ELL.

ELECTRICAL

Constant supply voltage 24V.
Electric transmission by magnetic contact.
Reversible polarity and hot plug.
Power consumption to 2.4W max.
Electrical Classification : Class III SELV device.

MECHANICAL

Spot diameter : 30,5mm.
Electronic circuit encased in a fire-proof polycarbonate housing.
Material : Aluminium (Spot & Slim Track).
Articulating base.
Operating temperature : -5° +40°.
ROHS components.
Interior use only.

NORMS



SPECIFICITIES

3 years guarantee.

COLORIS



SPOT
MINI D
SLIM

OPTICAL

Luminous flux according to Bining : 300/250 lumens.
Colour temperature : 2400 K to 5000 K.
Service Range : 70 % of nominal flux after 25 000 hours.
Colour Rendering Index : CRI 90.
PMMA acrylic lens, efficiency ~90 %.
Available degrees : 10°, 29°, 48° et ELL.

ELECTRICAL

Constant supply voltage 24V.
Electric transmission by magnetic contact.
Reversible polarity and hot plug.
Power consumption to 2.4W max.
Electrical Classification : Class III SELV device.

MECHANICAL

Spot diameter : 24mm.
Electronic circuit encased in a fire proof polycarbonate housing
Material : Aluminium (Spot & Slim Track)
Articulating base.
Operating temperature : -5° +40°.
ROHS components.
Interior use only.

NORMS



SPECIFICITIES

3 years guarantee.

COLORS





**SPOT
MICRO D
SLIM**

OPTICAL

Luminous flux according to Bining : 200/180 lumens.
Colour temperature : 2400 K to 5000 K.
Service Range : 70 % of nominal flux after 25 000 hours.
Colour Rendering Index : CRI 90, CRI 95 (on demand).
PMMA acrylic lens, efficiency ~90 %.
Available degrees : 16°, 24°, 40° et ELL.

ELECTRICAL

Constant supply voltage 24V.
Electric transmission by magnetic contact.
Reversible polarity and hot plug.
Power consumption to 1.8W max.
Electrical Classification : Class III SELV device.

MECHANICAL

Spot diameter : 16mm.
Electronic circuit encased in a fire proof polycarbonate housing
Material : Aluminium (Spot & Slim Track)
Articulating base.
Operating temperature : -5° +40°.
ROHS components.
Interior use only.

NORMS



SPECIFICITIES

3 years guarantee.

COLORS



**SPOT
MINI L
PICCOLO**

OPTICAL

Luminous flux according to Bining : 300/250 lumens.
Colour temperature : 2400 K to 5000 K (2 at 3 Macadam step).
Service Range : 70 % of nominal flux after 25 000 hours.
Colour Rendering Index : CRI 90.
PMMA acrylic lens, efficiency ~90 %.
Available degrees : 10°, 29°, 48° and ELL

ELECTRICAL

Constant supply voltage 24V.
Electric transmission by magnetic contact.
Reversible polarity and hot plug.
Power consumption to 2.4W max.
Electrical classification : Class III SELV device.

MECHANICAL

Spot diameter : 24mm.
Electronic circuit encased in a fire proof polycarbonate housing.
Articulating base, patented magnetic ball joint.
Attachment by magnetic contact.
Operating temperature : -5° +40°.
ROHS components.
Interior use only.

NORMS



SPECIFICITIES

Mechanical adjustment of its intensity (from 5% to 100%) by a "calibrator".
Electrolytic treatment available.
Color track profile : White or Black.
3 years guarantee.

COLORS





**SPOT L5
PICCOLO**

OPTICAL

Luminous flux according to Bining : 800/600 lumens.
Colour temperature : 2700 K to 4000 K (2 at 3 Macadam step).
Service Range : 70 % of nominal flux after 50 000 hours.
Colour Rendering Index : CRI 90.
PMMA acrylic lens, efficiency ~90 %.
Available degrees : 15°, 25°, 40°, 50° et ELL

ELECTRICAL

Constant supply voltage 24V.
Electric transmission by magnetic contact.
Reversible polarity and hot plug.
Power consumption to 9.6W max.
Electrical classification : Class III SELV device.

MECHANICAL

Spot diameter : 42,8mm.
Electronic circuit encased in a fire proof polycarbonate housing.
Articulating base, patented magnetic ball joint.
Attachment by magnetic contact.
Operating temperature : -5° +40°.
ROHS components.
Interior use only.

NORMS



SPECIFICITIES

Mechanical adjustment of its intensity (from 5% to 100%) by a "calibrator".
Electrolytic treatment available.
Color track profile : White or Black.
3 years guarantee.

COLORS



**SPOT C5
PICCOLO**

OPTICAL

Luminous flux according to Bining : 800/600 lumens.
Colour temperature : 2700 K to 4000 K (2 at 3 Macadam step).
Service Range : 70 % of nominal flux after 50 000 hours.
Colour Rendering Index : CRI 90.
PMMA acrylic lens, efficiency ~90 %.
Available degrees : 15°, 25°, 40°, 50° et ELL.

ELECTRICAL

Constant supply voltage 24V.
Electric transmission by magnetic contact.
Reversible polarity and hot plug.
Power consumption to 9.6W max.
Electrical Classification : Class III SELV device.

MECHANICAL

Spot diameter : 42,9mm.
Electronic circuit encased in a fire proof polycarbonate housing.
Articulating base, patented magnetic ball joint.
Attachment by magnetic contact.
Operating temperature : -5° +40°.
ROHS components.
Interior use only.

NORMS



SPECIFICITIES

Mechanical adjustment of its intensity (from 5% to 100%) by a "calibrator".
Electrolytic treatment available.
Color track profile : White or Black.
3 years guarantee.

COLORS





SPOT C
PICCOLO

OPTICAL

Luminous flux according to Bining : 300/250 lumens.
Colour temperature : 2400 K to 5000 K.
Service Range : 70 % of nominal flux after 50 000 hours.
Colour Rendering Index : CRI 90.
PMMA acrylic lens, efficiency ~90 %.
Available degrees : 10°, 18°, 28°, 40° et ELL.

ELECTRICAL

Constant supply voltage 24V.
Electric transmission by magnetic contact.
Reversible polarity and hot plug.
Power consumption to 2.4W max.
Electrical classification : Class III SELV device.

MECHANICAL

Spot diameter : 32mm.
Electronic circuit encased in a fire proof polycarbonate housing.
Articulating base, patented magnetic ball joint.
Attachment by magnetic contact.
Operating temperature : -5° +40°.
ROHS components.
Interior use only.

NORMS



SPECIFICITIES

Mechanical adjustment of its intensity (from 5% to 100%) by a "calibrator".
Electrolytic treatment available.
Color track profile : White or Black.
3 years guarantee.

COLORS



SPOT
MINI C
PICCOLO

OPTICAL

Luminous flux according to Bining : 300/250 lumens.
Colour temperature : 2400 K to 5000 K.
Service Range : 70 % of nominal flux after 25 000 hours.
Colour Rendering Index : CRI 90.
PMMA acrylic lens, efficiency ~90 %.
Available degrees : 10°, 29°, 48° et ELL.

ELECTRICAL

Constant supply voltage 24V.
Electric transmission by magnetic contact.
Reversible polarity and hot plug.
Power consumption to 2.4W max.
Electrical Classification : Class III SELV device.

MECHANICAL

Spot diameter : 24mm.
Electronic circuit encased in a fire proof polycarbonate housing
Articulating base, patented magnetic ball joint.
Attachment by magnetic contact.
Operating temperature : -5° +40°.
ROHS components.
Interior use only.

NORMS



SPECIFICITIES

Mechanical adjustment of its intensity (from 5% to 100%) by a "calibrator".
Electrolytic treatment available.
Color track profile : White or Black.
3 years guarantee.

COLORS





SPOT
MICRO C
PICCOLO

OPTICAL

Luminous flux according to Bining : 200/180 lumens.
Colour temperature : 2400 K to 5000 K.
Service Range : 70 % of nominal flux after 25 000 hours.
Colour Rendering Index : CRI 90, CRI 95 (on demand).
PMMA acrylic lens, efficiency ~90 %.
Available degrees : 16°, 24°, 40° et ELL.

ELECTRICAL

Constant supply voltage 24V.
Electric transmission by magnetic contact.
Reversible polarity and hot plug.
Power consumption to 1.8W max.
Electrical classification : Class III SELV device.

MECHANICAL

Spot diameter : 15mm.
Electronic circuit encased in a fire proof polycarbonate housing
Articulating base, patented magnetic ball joint.
Attachment by magnetic contact.
Operating temperature : -5° +40°.
ROHS components.
Interior use only.

NORMS



SPECIFICITIES

Mechanical adjustment of its intensity (from 5% to 100%) by a "calibrator".
Electrolytic treatment available.
Color track profile : White or Black.
3 years guarantee.

COLORS



SPOT F5
PICCOLO

OPTICAL

Luminous flux according to Bining : 330 - 9700 cd max.
Cd filter 253 : 3000 à 290)
Colour temperature : 2400 K to 5000 K.
Service Range : 70 % of nominal flux after 50 000 hours.
Colour Rendering Index : CRI 90.
PMMA acrylic lens, efficiency ~90 %.
Available degrees : 5° to 30° (ELL + OVALE).

ELECTRICAL

Constant supply voltage 24V.
Electric transmission by magnetic contact.
Reversible polarity and hot plug.
Power consumption to 5W max.
Electrical Classification : Class III SELV device.

MECHANICAL

Spot diameter : 34mm.
Articulating base, patented magnetic ball joint.
Attachment by magnetic contact.
Operating temperature : -5° +40°.
ROHS components.
Interior use only.

NORMS



SPECIFICITIES

Electrolytic treatment available.
Color track profile : White or Black.
3 years guarantee.

COLORS





SPOT MINI F
PICCOLO

OPTICAL

Luminous flux according to Bining : 730 - 4400 cd max.
(Cd filter 253 : 2200 à 440)
Colour temperature : 2400 K to 5000 K.
Service Range : 70 % of nominal flux after 50 000 hours.
Colour Rendering Index : CRI 90.
PMMA acrylic lens, efficiency ~90 %.
Available degrees : 6° à 25° (ELL + OVALE)

MECHANICAL

Spot diameter : 27mm.
Articulating base, patented magnetic ball joint.
Attachment by magnetic contact.
Operating temperature : -5° +40°.
ROHS components.
Interior use only.

SPECIFICITIES

Electrolytic treatment available.
Color track profile : White or Black.
3 years guarantee.

ELECTRICAL

Constant supply voltage 24V.
Electric transmission by magnetic contact.
Reversible polarity and hot plug.
Power consumption to 2.5W max.
Electrical Classification : Class III SELV device.

NORMS



COLORS



SPOT
BUBBLE
SLIM

OPTICAL

Luminous flux according to Bining : 1500/1200 lumens.
Colour temperature : 2700 K to 4000 K (on 2 to 3 Macadam steps).
Service Range : 70 % of nominal flux after 50 000 hours.
Colour Rendering Index : CRI 90.
PMMA acrylic lens, efficiency ~90 %.
Interchangeable lens.
Available degrees : 10° , 15° , 25° , 35° & ELL.

MECHANICAL

Dimensions : Diameter 80mm (Optics 55.5mm),
Height excluding mounting system 66mm.
Material : Aluminium (spot) and Steel (dome)
Type of mounting : on track
Operating temperature : -5° +40°.
ROHS components.
Interior use only.

SPECIFICITIES

Electrolytic treatments are possible.
3 years guarantee.

ELECTRICAL

Constant supply voltage 24V.
Supply connection : Polarised output connectors.
Power consumption to 18W max
Electrical Classification : Class III SELV device.

NORMS



COLORS





**PICCOLO
TRACK**

ELECTRICAL

Track power supply box by magnetic connection and output wires.
Maximum capacity of circuit equipped light sources with 2 meters track : 150W max.

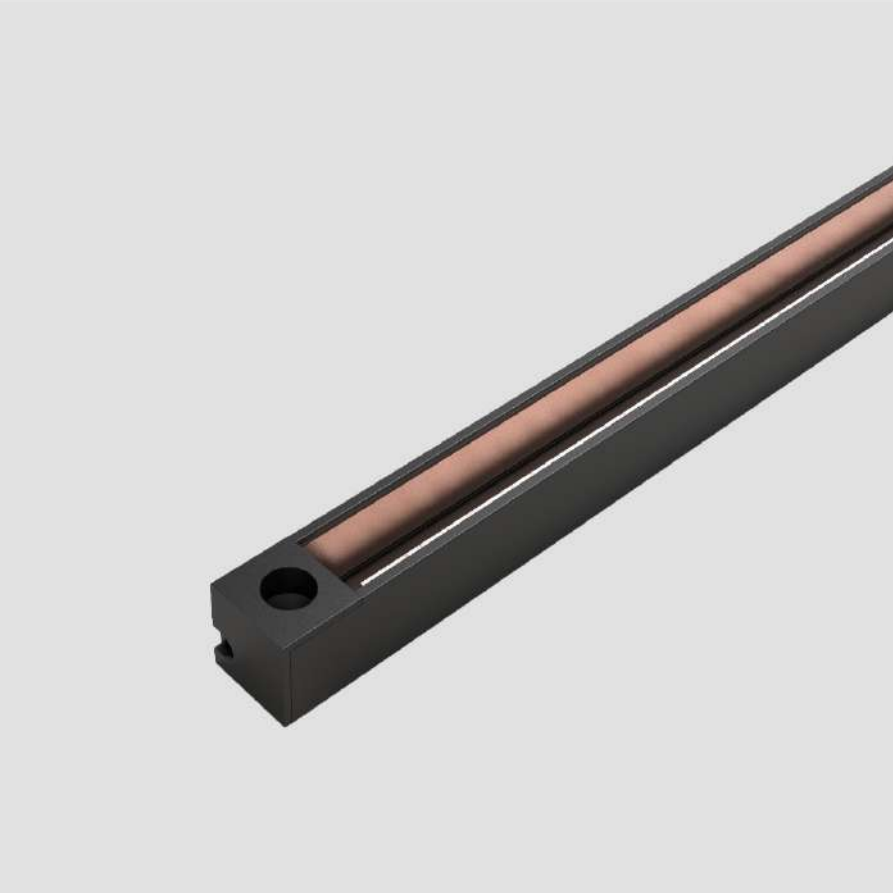
MECHANICAL

27 x 15 mm U profile, fireproof polycarbonate.
Standard lengths and made to order.
Track is attached by D3 countersunk screws.
Lighting sources are attached to the track by magnetic contact.
Operating temperature : -5° +40°.
Interior use only.

SPECIFICITIES

Track can be sized to the nearest centimeter (maximum 200cm by track).
Optional protective cover to conceal track segments not in use.
3 years guarantee.

NORMS



**SLIM
TRACK
MAGNETIC**

ELECTRICAL

Track power supply box by magnetic connection and output wires.
Maximum capacity of circuit equipped light sources with 2 meters track : 150W max.

MECHANICAL

14 x 15 mm U profile, fireproof polycarbonate.
Standard lengths and made to order.
Track is attached by D3 countersunk screws.
Lighting sources are attached to the track by magnetic contact.
Operating temperature : -5° +40°.
Interior use only.

SPECIFICITIES

Track can be sized to the nearest centimeter (maximum 200cm by track).
Optional protective cover to conceal track segments not in use.
3 years guarantee.

NORMS



mast



MAST
MICRO

OPTICAL

Luminous flux according to Bining : 200/180 lumens.
Colour temperature : 2400 K to 5000 K.
Service Range : 70 % of nominal flux after 25 000 hours.
Colour Rendering Index : CRI 90, CRI 95 (on demand).
PMMA acrylic lens, efficiency ~90 %.
Available degrees : 16°, 24°, 40° & ELL.

ELECTRICAL

Constant current supply : 500 mA.
Supply connection : Polarised output connectors.
Power consumption to 1.5W max.
Electrical Classification : Class III SELV device.

MECHANICAL

Spot : diameter 15mm. Mast : diameter 5mm, standard height and Made-to-measure heights on request (Max : 400mm).
Orientation : horizontal 320° & vertical 120°.
Horizontal locking adjustment by tightening screw cover.
Operating temperature : -5° +40°.
ROHS components.
Interior use only.

NORMS



SPECIFICITIES

Electrolytic treatment available.
3 years guarantee.

COLORS



MAST
1C

OPTICAL

Luminous flux according to Bining : 200/180 lumens.
Colour temperature : 2400 K to 5000 K.
Service Range : 70 % of nominal flux after 25 000 hours.
Colour Rendering Index : CRI 90, CRI 95 (on demand).
PMMA acrylic lens, efficiency ~90 %.
Available degrees : 16°, 24°, 40° & ELL.

ELECTRICAL

Constant current supply : 500 mA.
Supply connection : Polarised output connectors.
Power consumption to 1.5W max.
Electrical Classification : Class III SELV device.

MECHANICAL

Spot : diameter 15mm. Mast : Diameter 6mm, Made-to-measure heights on request (Max : 600mm).
Orientation by patented magnetic ball joint.
Fixing integrated with bracket, or fixing cover attached to it.
Operating temperature : -5° +40°.
ROHS components.
Interior use only.

NORMS



SPECIFICITIES

Electrolytic treatment available.
3 years guarantee.

COLORS





**MAST
1C-2**

OPTICAL

Luminous flux according to Bining : 200/180 lumens.
Colour temperature : 2400 K to 5000 K.
Service Range : 70 % of nominal flux after 25 000 hours.
Colour Rendering Index : CRI 90, CRI 95 (on demand).
PMMA acrylic lens, efficiency ~90 %.
Available degrees : 16°, 24°, 40° & ELL.

ELECTRICAL

Constant current supply : 500 mA.
Supply connection : Polarised output connectors.
Power consumption to 3W max.
Electrical Classification : Class III SELV device.

MECHANICAL

Spot : diameter 15mm. Mast : Diameter 6mm, Made-to-measure heights on request (Max : 600mm).
Orientation by patented magnetic ball joint.
Fixing integrated with bracket, or fixing cover attached to it.
Operating temperature : -5° +40°.
ROHS components.
Interior use only.

NORMS



SPECIFICITIES

Electrolytic treatment available.
3 years guarantee.

COLORS



**MAST
2C**

OPTICAL

Luminous flux according to Bining : 200/180 lumens.
Colour temperature : 2400 K to 5000 K.
Service Range : 70 % of nominal flux after 25 000 hours.
Colour Rendering Index : CRI 90, CRI 95 (on demand).
PMMA acrylic lens, efficiency ~90 %.
Available degrees : 16°, 24°, 40° & ELL.

ELECTRICAL

Constant current supply : 500 mA.
Supply connection : Polarised output connectors.
Power consumption to 3W max.
Electrical Classification : Class III SELV device.

MECHANICAL

Spot : diameter 15mm. Mast : Diameter 6mm, Made-to-measure heights on request (Max : 600mm).
Orientation by patented magnetic ball joint.
Fixing integrated with bracket, or fixing cover attached to it.
Operating temperature : -5° +40°.
ROHS components.
Interior use only.

NORMS



SPECIFICITIES

Electrolytic treatments are possible.
3 years guarantee.

COLORS





**MAST
3C**

OPTICAL

Luminous flux according to Bining : 200/180 lumens.
Colour temperature : 2400 K to 5000 K.
Service Range : 70 % of nominal flux after 25 000 hours.
Colour Rendering Index : CRI 90, CRI 95 (on demand).
PMMA acrylic lens, efficiency ~90 %.
Available degrees : 16°, 24°, 40° & ELL.

ELECTRICAL

Constant current supply : 500 mA.
Supply connection : Polarised output connectors.
Power consumption to 4.5W max.
Electrical Classification : Class III SELV device.

MECHANICAL

Spot : diameter 15mm. Mast : Diameter 6mm, Made-to-measure heights on request (Max : 600mm).
Orientation by patented magnetic ball joint.
Fixing integrated with bracket, or fixing cover attached to it.
Operating temperature : -5° +40°.
ROHS components.
Interior use only.

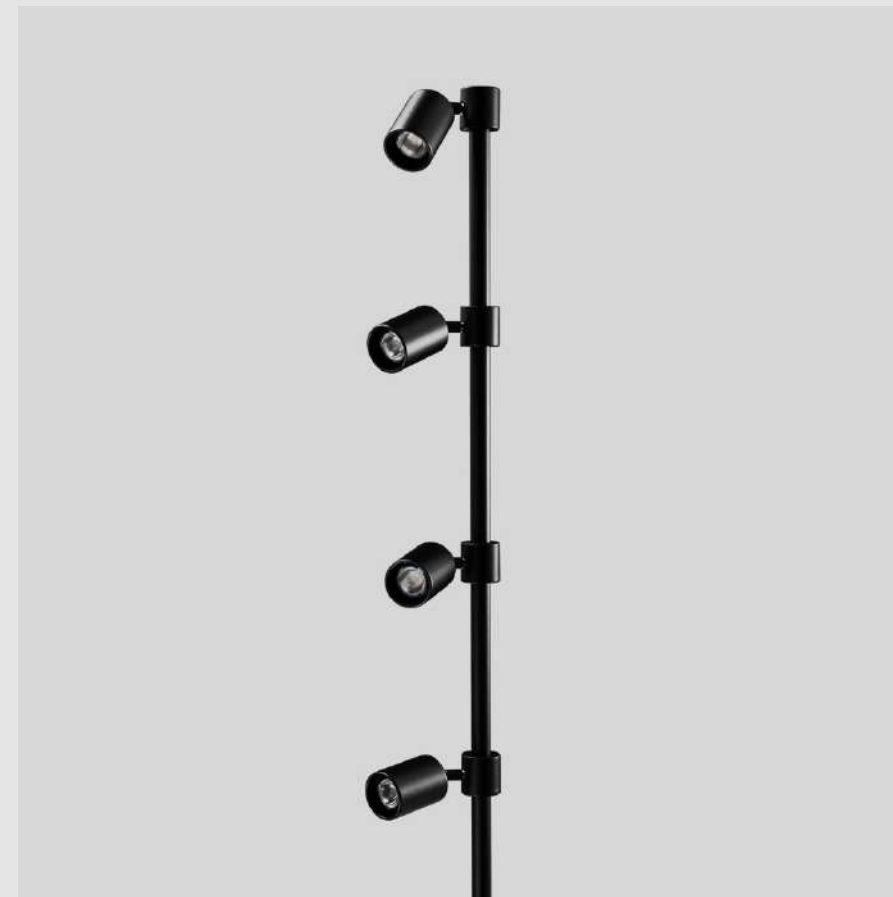
NORMS



SPECIFICITIES

Electrolytic treatments are possible.
3 years guarantee.

COLORS



**MAST
4C**

OPTICAL

Luminous flux according to Bining : 200/180 lumens.
Colour temperature : 2400 K to 5000 K.
Service Range : 70 % of nominal flux after 25 000 hours.
Colour Rendering Index : CRI 90, CRI 95 (on demand).
PMMA acrylic lens, efficiency ~90 %.
Available degrees : 16°, 24°, 40° & ELL.

ELECTRICAL

Constant current supply : 500 mA.
Supply connection : Polarised output connectors.
Power consumption to 6W max.
Electrical Classification : Class III SELV device.

MECHANICAL

Spot : diameter 15mm. Mast : Diameter 6mm, Made-to-measure heights on request (Max : 600mm).
Orientation by patented magnetic ball joint.
Fixing integrated with bracket, or fixing cover attached to it.
Operating temperature : -5° +40°.
ROHS components.
Interior use only.

NORMS

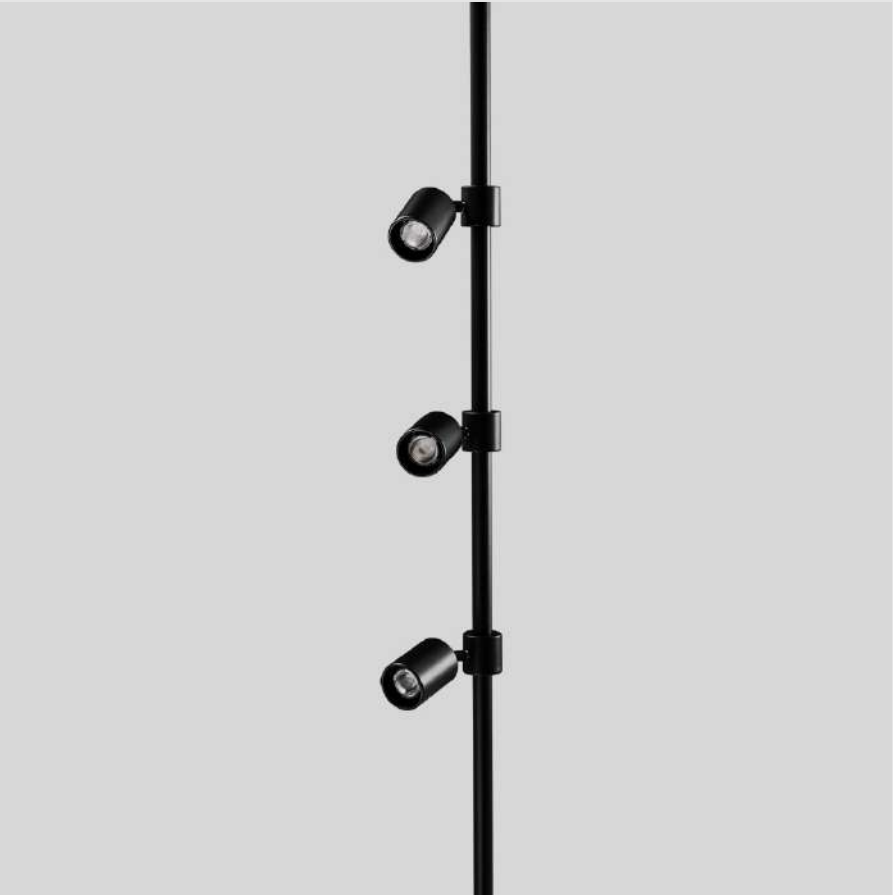


SPECIFICITIES

Electrolytic treatments are possible.
3 years guarantee.

COLORS





MAST 6C

OPTICAL

Luminous flux according to Bining : 200/180 lumens.
Colour temperature : 2400 K to 5000 K.
Service Range : 70 % of nominal flux after 25 000 hours.
Colour Rendering Index : CRI 90, CRI 95 (on demand).
PMMA acrylic lens, efficiency ~90 %.
Available degrees : 16° , 24° , 40° & ELL.

ELECTRICAL

Constant current supply : 500 mA.
Supply connection : Polarised output connectors.
Power consumption to 9W max.
Electrical Classification : Class III SELV device.

MECHANICAL

Spot : diameter 15mm. Mast : Diameter 6mm, Made-to-measure heights on request (Max : 1200mm).
Orientation by patented magnetic ball joint.
Minispot spacing on request.
Fixing up & down integrated with bracket, or fixing up & down cover attached to it.
Operating temperature : -5° +40°.
ROHS components.
Interior use only.

NORMS



SPECIFICITIES

Electrolytic treatments are possible.
3 years guarantee.

COLORS



spot



SPOT MICRO F
PATERE

OPTICAL

Luminous flux according to Bining : 1560-520-180 lumens.
(Cd filter 253 : 2200 à 440)
Colour temperature : 2400 K to 5000 K.
Service Range : 70 % of nominal flux after 25 000 hours.
Colour Rendering Index : CRI 90.
Glass lens
Available degrees : 8°, 20° and 35°(ELL + OVALE).

ELECTRICAL

Constant supply voltage 500mA
Reversible polarity and hot plug.
Power consumption to 1.5W max.
Electrical Classification : Class III SELV device.

MECHANICAL

Spot diameter : 19mm.
Articulating base
Lens system for 3 positions.
Operating temperature : -5° +40°.
ROHS components.
Interior use only.

NORMS



SPECIFICITIES

3 years guarantee.

COLORS



CEILING
SPOT 10

OPTICAL

Luminous flux according to Bining : 800/600 Lumens.
Colour temperature : 2700 K to 4000 K (on 2 to 3 Macadam steps).
Service range : 70 % of nominal flux after 50 000 hours.
Colour Rendering Index : CRI 90.
PMMA acrylic lens, efficiency ~90 %.
Available degrees : 15°, 25°,40°, 50° et ELL.

ELECTRICAL

Constant supply voltage 0.7A ;
Supply connection : Polarised output connectors.
Power consumption to 8W max, excluding supply.
Electrical classification: Class III TBTS device

MECHANICAL

Dimensions : Diameter 45mm,
Height excluding mounting system 90mm.
Operating temperature: -5° +40°;
ROHS components;
Interior use only.

NORMS



SPECIFICITIES

Electrolytic treatment available;
3 years guarantee.

COLORS





SPOT BUBBLE RECESSED

OPTICAL

Luminous flux according to Bining : 1500/1200 lumens.
Colour temperature : 2700 K to 4000 K (on 2 to 3 Macadam steps).
Service Range : 70 % of nominal flux after 50 000 hours.
Colour Rendering Index : CRI 90.
PMMA acrylic lens, efficiency ~90 %.
Interchangeable lens.
Available degrees : 10°, 15°, 25°, 35° & ELL.

ELECTRICAL

Constant supply voltage 1.2A.
Supply connection : Polarised output connectors.
Power consumption to 15W max
Electrical Classification : Class III SELV device.

MECHANICAL

Dimensions : Diameter 80mm (Optics 55.5mm), Height excluding mounting system 66mm.
Material : Aluminium (spot) and Steel (dome)
Type of mounting : recessed
Operating temperature : -5° +40°.
ROHS components.
Interior use only.

NORMS



SPECIFICITIES

Electrolytic treatments are possible.
3 years guarantee.

COLORS



BUBBLE APPLIQUE

OPTICAL

Luminous flux according to Bining : 1500/1200 lumens.
Colour temperature : 2700 K to 4000 K (on 2 to 3 Macadam steps).
Service Range : 70 % of nominal flux after 50 000 hours.
Colour Rendering Index : CRI 90.
PMMA acrylic lens, efficiency ~90 %.
Interchangeable lens.
Available degrees : 10°, 15°, 25°, 35° & ELL.

ELECTRICAL

Constant supply voltage 1.2A.
Supply connection : Polarised output connectors.
Power consumption to 15W max
Electrical Classification : Class III SELV device.

MECHANICAL

Dimensions : Diameter 80mm (Optics 55.5mm), Height excluding mounting system 66mm.
Material : Aluminium (spot) and Steel (dome)
Type of mounting : wall
Operating temperature : -5° +40°.
ROHS components.
Interior use only.

NORMS



SPECIFICITIES

Electrolytic treatments are possible.
3 years guarantee.

COLORS





**BUBBLE
PENDANT**

OPTICAL

Luminous flux according to Bining : 1500/1200 lumens.
Colour temperature : 2700 K to 4000 K (on 2 to 3 Macadam steps).
Service Range : 70 % of nominal flux after 50 000 hours.
Colour Rendering Index : CRI 90.
PMMA acrylic lens, efficiency ~90 %.
Interchangeable lens.
Available degrees : 10°, 15°, 25°, 35° & ELL.

ELECTRICAL

Constant supply voltage 1.2A.
Supply connection : Polarised output connectors.
Power consumption to 15W max
Electrical Classification : Class III SELV device.

MECHANICAL

Dimensions : Diameter 80mm (Optics 55.5mm), Height excluding mounting system 66mm.
Material : Aluminium (spot) and Steel (dome)
Type of mounting : pendant
Operating temperature : -5° +40°.
ROHS components.
Interior use only.

NORMS



SPECIFICITIES

Electrolytic treatments are possible.
3 years guarantee.

COLORS



**SPOT
MICRO C**

OPTICAL

Luminous flux according to Bining : 200/180 lumens.
Colour temperature : 2400 K to 5000 K.
Service Range : 70 % of nominal flux after 25 000 hours.
Colour Rendering Index : CRI 90, CRI 95 (on demand).
PMMA acrylic lens, efficiency ~90 %.
Available degrees : 16°, 24°, 40° et ELL.

ELECTRICAL

Constant current supply : 500 mA.
Supply connection : Polarised output connectors.
Power consumption to 1.5W max.
Electrical Classification : Class III SELV device.

MECHANICAL

Spot : diameter 15mm.
Articulating base, patented magnetic ball joint.
Mounting on hook.
Operating temperature : -5° +40°.
ROHS components.
Interior use only.

NORMS



SPECIFICITIES

Electrolytic treatments are possible.
3 years guarantee.

COLORS





SPOT MINI C

OPTICAL

Luminous flux according to Bining : 300/250 lumens.
Colour temperature : 2400 K to 5000 K.
Service Range : 70 % of nominal flux after 25 000 hours.
Colour Rendering Index : CRI 90.
PMMA acrylic lens, efficiency ~90 %.
Available degrees : 10°, 29°, 48° et ELL.

ELECTRICAL

Constant current supply : 700mA.
Supply connection : Polarised output connectors.
Power consumption to 2W max..
Electrical Classification : Class III SELV device.

MECHANICAL

Spot : diameter 24mm.
Articulating base, patented magnetic ball joint.
Mounting on hook.
Operating temperature : -5° +40°.
ROHS components.
Interior use only.

NORMS



SPECIFICITIES

Electrolytic treatments are possible.
3 years guarantee.

COLORS



SPOT C

OPTICAL

Luminous flux according to Bining : 300/250 lumens.
Colour temperature : 2400 K to 5000 K.
Service Range : 70 % of nominal flux after 50 000 hours.
Colour Rendering Index : CRI 90.
PMMA acrylic lens, efficiency ~90 %.
Available degrees : 10°, 18°, 28°, 40° et ELL.

ELECTRICAL

Constant current supply : 700mA.
Supply connection : Corrected proprietary connector system, polarised output connectors.
Power consumption to 2W max.
Electrical Classification : Class III SELV device.

MECHANICAL

Spot : diameter 32,5mm.
Articulating base, patented magnetic ball joint.
Mounting on hook.
Operating temperature : -5° +40°.
ROHS components.
Interior use only.

NORMS



SPECIFICITIES

Electrolytic treatments are possible.
3 years guarantee.

COLORS





SPOT MINI L

OPTICAL

Luminous flux according to Bining : 800/600 lumens.
Colour temperature : 2700 K to 4000 K (2 at 3 Macadam step).
Service Range : 70 % of nominal flux after 50 000 hours.
Colour Rendering Index : CRI 90.
PMMA acrylic lens, efficiency ~90 %.
Available degrees : 15°, 25°, 40°, 50° et ELL.

ELECTRICAL

Constant current supply : 700mA.
Supply connection : Polarised output connectors.
Power consumption to 8W max.
Electrical Classification : Class III SELV device.

MECHANICAL

Spot : diameter 24mm.
Articulating base, patented magnetic ball joint.
Mounting on hook.
Operating temperature : -5° +40°.
ROHS components.
Interior use only.

NORMS



SPECIFICITIES

Electrolytic treatments are possible.
3 years guarantee.

COLORS



SPOT L5

OPTICAL

Luminous flux according to Bining : 800/600 lumens.
Colour temperature : 2700 K to 4000 K (2 at 3 Macadam step).
Service Range : 70 % of nominal flux after 50 000 hours.
Colour Rendering Index : CRI 90.
PMMA acrylic lens, efficiency ~90 %.
Available degrees : 15°, 25°, 40°, 50° et ELL.

ELECTRICAL

Constant current supply : 700mA.
Supply connection : Polarised output connectors.
Power consumption to 8W max.
Electrical Classification : Class III SELV device.

MECHANICAL

Spot : diameter 43mm.
Articulating base, patented magnetic ball joint.
Mounting on hook.
Operating temperature : -5° +40°.
ROHS components.
Interior use only.

NORMS



SPECIFICITIES

Electrolytic treatments are possible.
3 years guarantee.

COLORS





SPOT C5

OPTICAL

Luminous flux according to Bining : 800/600 lumens.
Colour temperature : 2700 K to 4000 K (2 at 3 Macadam step).
Service Range : 70 % of nominal flux after 50 000 hours.
Colour Rendering Index : CRI 90.
PMMA acrylic lens, efficiency ~90 %.
Available degrees : 15°, 25°, 40°, 50° et ELL.

ELECTRICAL

Constant current supply : 700mA.
Supply connection : Polarised output connectors.
Power consumption to 8W max.
Electrical Classification : Class III SELV device.

MECHANICAL

Spot : diameter 43mm.
Articulating base, patented magnetic ball joint.
Mounting on hook.
Operating temperature : -5° +40°.
ROHS components.
Interior use only.

NORMS



SPECIFICITIES

Electrolytic treatments are possible.
3 years guarantee.

COLORS



SPOT MICRO D

OPTICAL

Luminous flux according to Bining : 200/180 lumens.
Colour temperature : 2400 K to 5000 K.
Service Range : 70 % of nominal flux after 25 000 hours.
Colour Rendering Index : CRI 90, CRI 95 (on demand).
PMMA acrylic lens, efficiency ~90 %.
Available degrees : 16°, 24°, 40° et ELL.

ELECTRICAL

Constant current supply : 500 mA.
Supply connection : Polarised output connectors.
Power consumption to 1.5W max.
Electrical Classification : Class III SELV device.

MECHANICAL

Spot : diameter 16mm.
Articulating base, patented magnetic ball joint.
Mounting on hook.
Operating temperature : -5° +40°.
ROHS components.
Interior use only.

NORMS



SPECIFICITIES

Electrolytic treatments are possible.
3 years guarantee.

COLORS





SPOT MINI D

OPTICAL

Luminous flux according to Bining : 300/250 lumens.
Colour temperature : 2400 K to 5000 K.
Service Range : 70 % of nominal flux after 25 000 hours.
Colour Rendering Index : CRI 90.
PMMA acrylic lens, efficiency ~90 %.
.Available degrees : 10°, 29°, 48° et ELL.

ELECTRICAL

Constant current supply : 700mA.
Supply connection : Polarised output connectors.
Power consumption to 2W max.
Electrical Classification : Class III SELV device.

MECHANICAL

Spot : diameter 24mm.
Articulating base.
Mounting on hook.
Operating temperature : -5° +40°.
ROHS components.
Interior use only.

NORMS



SPECIFICITIES

Electrolytic treatments are possible.
3 years guarantee.

COLORS



SPOT D

OPTICAL

Luminous flux according to Bining : 300/250 lumens.
Colour temperature : 2400 K to 5000 K.
Service Range : 70 % of nominal flux after 50 000 hours.
Colour Rendering Index : CRI 90.
PMMA acrylic lens, efficiency ~90 %.
Available degrees : 10°, 18°, 28°, 40° et ELL.

ELECTRICAL

Constant current supply : 700mA.
Supply connection : Polarised output connectors.
Power consumption to 2W max.
Electrical Classification : Class III SELV device.

MECHANICAL

Spot : diameter 30,5mm.
Articulating base.
Mounting on hook.
Operating temperature : -5° +40°.
ROHS components.
Interior use only.

NORMS



SPECIFICITIES

Electrolytic treatments are possible.
3 years guarantee.

COLORS





SPOT D8

OPTICAL

Luminous flux according to Bining : 800/600 lumens.
Colour temperature : 2700 K to 4000 K (2 to 3 Macadam step).
Service Range : 70 % of nominal flux after 50 000 hours.
Colour Rendering Index : CRI 90.
PMMA acrylic lens, efficiency ~90 %.
Interchangeable lens.
Available degrees : 15°, 25°, 40°, 50° and ELL.

ELECTRICAL

Constant current supply : 700mA.
Supply connection : Polarised output connectors.
Power consumption to 8W max.Electrical Classification :
Class III SELV device.

MECHANICAL

Spot : diameter 45mm.
Articulating base.
Mounting on hook.
Operating temperature : -5° +40°.
ROHS components.
Interior use only.

NORMS



SPECIFICITIES

Electrolytic treatments are possible.
3 years guarantee.

COLORS



SPOT D12

OPTICAL

Luminous flux according to Bining : 1200/1000 lumens.
Colour temperature : 2700 K to 4000 K (2 to 3 Macadam step).
Service Range : 70 % of nominal flux after 50 000 hours.
Colour Rendering Index : CRI 90.
PMMA acrylic lens, efficiency ~90 %.
Interchangeable lens.
Available degrees : 15°, 25°, 40°, 50° and ELL.

ELECTRICAL

Constant current supply : 1A.
Supply connection : Polarised output connectors.
Power consumption to 12W max.
Electrical Classification : Class III SELV device.

MECHANICAL

Spot : diameter 45mm.
Articulating base.
Mounting on hook.
Operating temperature : -5° +40°.
ROHS components.
Interior use only.

NORMS



SPECIFICITIES

Electrolytic treatments are possible.
3 years guarantee.

COLORS





SPOT D15

OPTICAL

Luminous flux according to Bining : 1500/1200 lumens.
Colour temperature : 2700 K to 4000 K (2 to 3 Macadam step).
Service Range : 70 % of nominal flux after 50 000 hours.
Colour Rendering Index : CRI 90.
PMMA acrylic lens, efficiency ~90 %.
Interchangeable lens.
Available degrees : 10°, 15°, 25°, 35° et ELL.

ELECTRICAL

Constant current supply : 1,2A.
Supply connection : Polarised output connectors.
Power consumption to 15W max.
Electrical Classification : Class III SELV device.

MECHANICAL

Spot : diameter 55mm.
Articulating base.
Mounting on hook.
Operating temperature : -5° +40°.
ROHS components.
Interior use only.

NORMS



SPECIFICITIES

Electrolytic treatments are possible.
3 years guarantee.

COLORS



SPOT D10
PATERE

OPTICAL

FRAMER
Luminous flux according to Bining: variable focal length
Adjustable focus : 10° à 35°
INTERCHANGEABLES LENSES
Luminous flux according to Bining : up to 5000cd
Degrees: 10°, 15°, 40° et ELL
ZOOM
Luminous flux according to Bining : 3000 to 15000 cd max
Adjustable focus : 8° to 30°

MECHANICAL

FRAMER
GOBO and filter holder

Diameter of spot : 50mm.
Articulated joint
Operating temperature: -5° +40°;
ROHS components;
Interior use only.

Colour temperature: 2700 K to 4000 K
Service Range: 70 % of nominal flux after 50 000 hours;
Colour Rendering Index : CRI 90, CRI 95 (on demand).

ELECTRICAL

900mA constant current supply.
Luminaire electrical power up to 10W.

NORMS



SPECIFICITIES

Electrolytic treatment available.
3 years guarantee.

COLORS



output door



**INSERT 10-O
ROUND
FIXED**

OPTICAL

Luminous flux according to Bining : 800/600 lumens.
Colour temperature : 2700 K to 4000 K (2 at 3 Macadam step).
Service Range : 70 % of nominal flux after 50 000 hours.
Colour Rendering Index : CRI 90.
PMMA acrylic lens, efficiency ~90 %.
.Available degrees : 15°, 25°, 40°, 50° et ELL.

ELECTRICAL

Constant current supply : 0,7A.
Supply connection : Polarised output connectors.
Power consumption to 8W max.
Electrical Classification : Class III SELV device.

MECHANICAL

Spot : diameter 50mm.
Dimensions : Diameter 50 mm, Overall Height 54.5mm.
Operating temperature : -5° +40°.
ROHS components.
Exterior use.

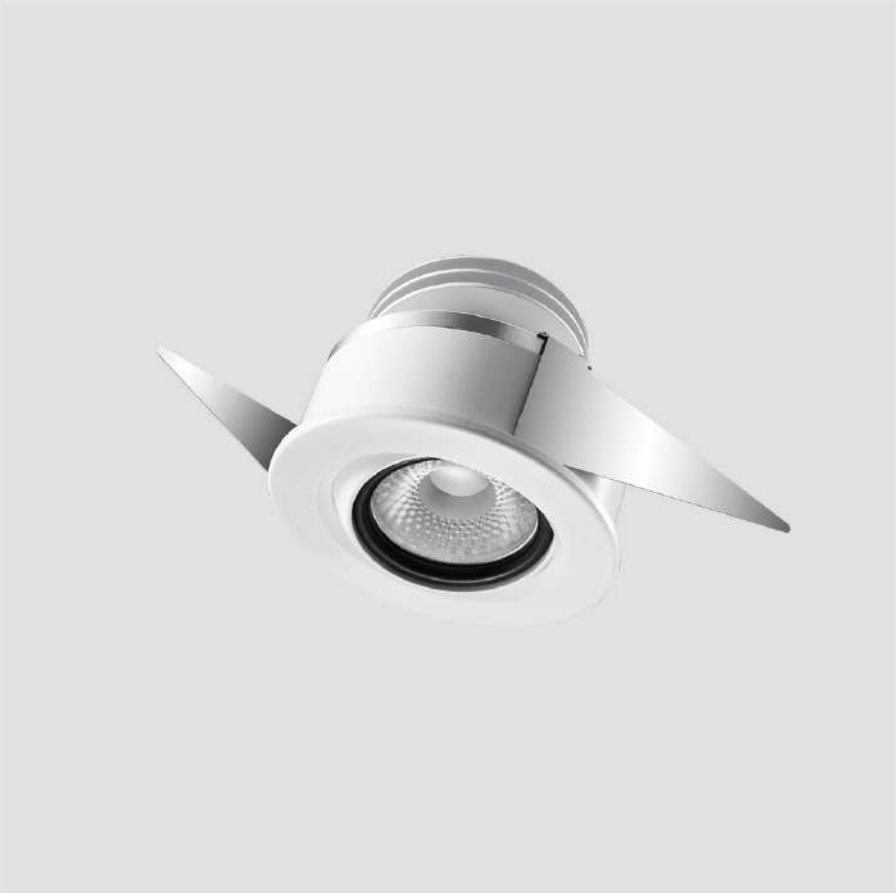
NORMS



SPECIFICITIES

3 years guarantee.

COLORS



**INSERT 10-O
ROUND
ADJUSTABLE**

OPTICAL

Luminous flux according to Bining : 800/600 lumens.
Colour temperature : 2700 K to 4000 K (2 at 3 Macadam step).
Service Range : 70 % of nominal flux after 50 000 hours.
Colour Rendering Index : CRI 90.
PMMA acrylic lens, efficiency ~90 %.
.Available degrees : 15°, 25°, 40°, 50° et ELL.

ELECTRICAL

Constant current supply : 0,7A.
Supply connection : Polarised output connectors.
Power consumption to 8W max.
Electrical Classification : Class III SELV device.

MECHANICAL

Dimensions : Diameter 70 mm, Overall Height 49mm.
Adjustable to a total angle of 50°.
Operating temperature : -5° +40°.
ROHS components.
Exterior use.

NORMS



SPECIFICITIES

3 years guarantee.

COLORS





INSERT 10-O LOW BRIGHTNESS

OPTICAL

Luminous flux according to Bining : 800/600 lumens.
Colour temperature : 2700 K to 4000 K (2 at 3 Macadam step).
Service Range : 70 % of nominal flux after 50 000 hours.
Colour Rendering Index : CRI 90.
PMMA acrylic lens, efficiency ~90 %.
.Available degrees : 15°, 25°, 40°, 50° et ELL.

ELECTRICAL

Constant current supply : 0,7A.
Supply connection : Polarised output connectors.
Power consumption to 8W max.
Electrical Classification : Class III SELV device.

MECHANICAL

Dimensions : Diameter 65 mm, Overall Height 75.5mm.
Operating temperature : -5° +40°
ROHS components.
Exterior use.

NORMS



SPECIFICITIES

3 years guarantee.

COLORS



SPOT C5-O

OPTICAL

Luminous flux according to Bining : 800/600 lumens.
Colour temperature : 2700 K to 4000 K (2 at 3 Macadam step).
Service Range : 70 % of nominal flux after 50 000 hours.
Colour Rendering Index : CRI 90.
PMMA acrylic lens, efficiency ~90 %.
Available degrees : 15°, 25°, 40°, 50° et ELL.

ELECTRICAL

Constant current supply : 700mA.
Supply connection : Polarised output connectors.
Power consumption to 8W max.
Electrical Classification : Class III SELV device.

MECHANICAL

Spot : diameter 33,5mm.
Mounting on hook.
Operating temperature : -5° +40°.
ROHS components.
Exterior use.

NORMS



SPECIFICITIES

3 years guarantee.

COLORS





SPOT C-O

OPTICAL

Luminous flux according to Bining : 300/250 lumens.
Colour temperature : 2400 K to 5000 K.
Service Range : 70 % of nominal flux after 50 000 hours.
Colour Rendering Index : CRI 90.
PMMA acrylic lens and window, efficiency ~90 %.
Honeycomb hexagonal cells 3*3 mm (flow cut at 60°).
Available degrees : 10°, 18°, 28°, 40° & ELL.

ELECTRICAL

Constant current supply : 700MA.
Supply connection : Polarised output connectors.
Power consumption to 2W max.Electrical Classification :
Class III SELV device.

MECHANICAL

Dimensions : Diameter 33,5mm,
Two mounting screws on hook.
Configurable to aluminum track (series of 3 or 5 spots).
Operating temperature : -5° +40°.
ROHS components.
Exterior use.

NORMS



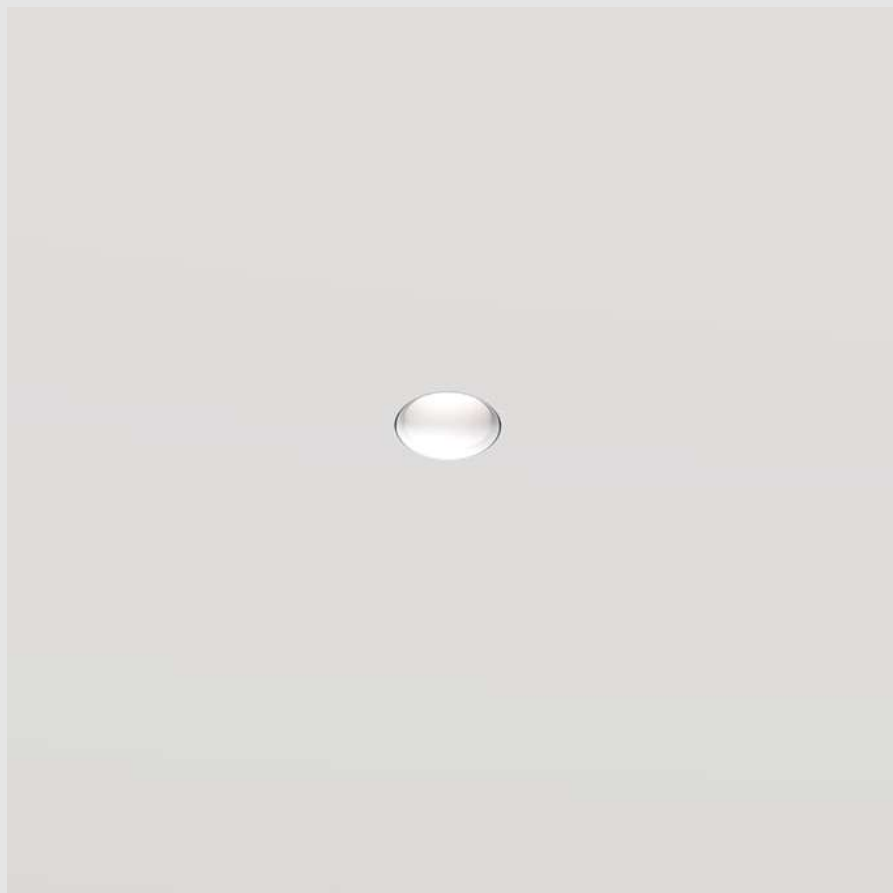
SPECIFICITIES

3 years guarantee.

COLORS



recessed



INSERT MINIMAL TRIMLESS

OPTICAL

Luminous flux according to Bining : 500 lumens.
Colour temperature : 2400 K to 5000 K (2 at 3 Macadam step).
Service Range : 70 % of nominal flux after 50 000 hours.
Colour Rendering Index : CRI 90.
PMMA acrylic lens, efficiency ~90 %.
.Available degrees : 16°, 24°, 40° and ELL.

ELECTRICAL

Constant current supply : 1.4A.
Supply connection : Polarised output connectors.
Power consumption to 4.5W max.
Electrical Classification : Class III SELV device.

MECHANICAL

Spot : diameter 15.5mm.
Operating temperature : -5° +40°.
ROHS components.
Interior use.

NORMS



SPECIFICITIES

Electrolytic treatments are possible.
3 years guarantee.

COLORS



INSERT 00 FIXE

OPTICAL

Luminous flux according to Bining : 200 lumens.
Colour temperature : 2400 K to 5000 K (2 at 3 Macadam step).
Service Range : 70 % of nominal flux after 50 000 hours.
Colour Rendering Index : CRI 90.
PMMA acrylic lens, efficiency ~90 %.
.Available degrees : 16°, 24°, 40° and ELL.

ELECTRICAL

Constant current supply : 500mA.
Supply connection : Polarised output connectors.
Power consumption to 1.5W max.
Electrical Classification : Class III SELV device.

MECHANICAL

Spot : diameter 21mm.
Operating temperature : -5° +40°.
ROHS components.
Interior use.

NORMS



SPECIFICITIES

Electrolytic treatments are possible.
3 years guarantee.

COLORS





INSERT 00 ROUND ADJUSTABLE 500

OPTICAL

Luminous flux according to Bining : 200/180 lumens.
Colour temperature : 2400 K to 5000 K.
Service Range : 70 % of nominal flux after 25 000 hours.
Colour Rendering Index : CRI 90.
PMMA acrylic lens, efficiency ~90 %.
Available degrees : 16°, 24°, 40° et ELL.

ELECTRICAL

Constant current supply : 500 mA.
Supply connection : Polarised output connectors.
Power consumption to 1.5W max.
Electrical Classification : Class III SELV device.

MECHANICAL

Dimensions : Diameter 34 mm,
Overall Height 17.5 mm.
Adjustable to a total angle of 40°.
Operating temperature : -5° +40°.
ROHS components.
Interior use only.

NORMS



SPECIFICITIES

Electrolytic treatments are possible.
3 years guarantee.

COLORS



INSERT 00 ROUND ADJUSTABLE 700

OPTICAL

Luminous flux according to Bining : 200/180 lumens.
Colour temperature : 2400 K to 5000 K.
Service Range : 70 % of nominal flux after 25 000 hours.
Colour Rendering Index : CRI 90.
PMMA acrylic lens, efficiency ~90 %.
Available degrees : 16°, 24°, 40° et ELL.

ELECTRICAL

Constant current supply : 700 mA.
Supply connection : Polarised output connectors.
Power consumption to 1.5W max.
Electrical Classification : Class III SELV device.

MECHANICAL

Dimensions : Diameter 34 mm,
Overall Height 26.5 mm.
Adjustable to a total angle of 40°.
Operating temperature : -5° +40°.
ROHS components.
Interior use only.

NORMS



SPECIFICITIES

Electrolytic treatments are possible.
3 years guarantee.

COLORS





INSERT 10 ROUND LOW BRIGHTNESS

OPTICAL

Luminous flux according to Bining : 800/600 lumens.
Colour temperature : 2700 K to 5000 K.
Service Range : 70 % of nominal flux after 25 000 hours.
Colour Rendering Index : CRI 90.
PMMA acrylic lens, efficiency ~90 %.
Available degrees : 15°, 25°, 40°, 50° et ELL.

ELECTRICAL

Constant current supply : 700 mA.
Supply connection : Polarised output connectors.
Power consumption to 8W max.
Electrical Classification : Class III SELV device.

MECHANICAL

Dimensions : Diameter 65 mm,
Overall Height 75 mm.
Operating temperature : -5° +40°.
ROHS components.
Interior use only.

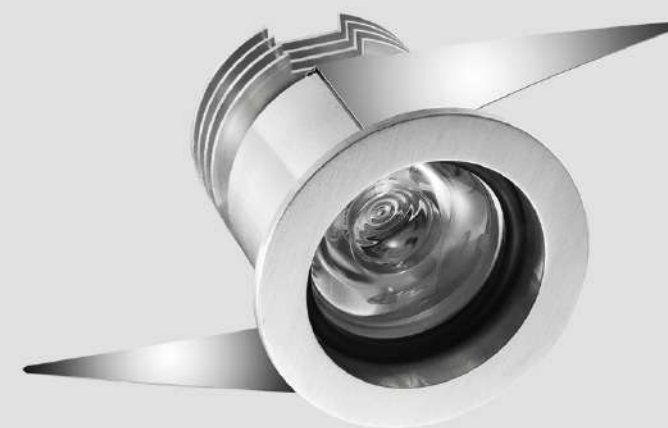
NORMS



SPECIFICITIES

Electrolytic treatments are possible.
3 years guarantee.

COLORS



INSERT 10 ROUND FIXED

OPTICAL

Luminous flux according to Bining : 800/600 lumens.
Colour temperature : 2700 K to 5000 K.
Service Range : 70 % of nominal flux after 25 000 hours.
Colour Rendering Index : CRI 90.
PMMA acrylic lens, efficiency ~90 %.
Available degrees : 15°, 25°, 40°, 50° et ELL.

ELECTRICAL

Constant current supply : 700 mA.
Supply connection : Polarised output connectors.
Power consumption to 8W max.
Electrical Classification : Class III SELV device.

MECHANICAL

Dimensions : Diameter 50 mm,
Overall Height 54.5 mm.
Operating temperature : -5° +40°.
ROHS components.
Interior use only.

NORMS



SPECIFICITIES

Electrolytic treatments are possible.
3 years guarantee.

COLORS





INSERT 10 ROUND ADJUSTABLE

OPTICAL

Luminous flux according to Bining : 800/600 lumens.
Colour temperature : 2700 K to 5000 K.
Service Range : 70 % of nominal flux after 25 000 hours.
Colour Rendering Index : CRI 90.
PMMA acrylic lens, efficiency ~90 %.
Available degrees : 15°, 25°,40°, 50° et ELL.

ELECTRICAL

Constant current supply : 700 mA.
Supply connection : Polarised output connectors.
Power consumption to 8W max.
Electrical Classification : Class III SELV device.

MECHANICAL

Dimensions : Diameter 70 mm,
Overall Height 49mm.
Adjustable to a total angle of 50°.
Operating temperature : -5° +40°.
ROHS components.
Interior use only.

NORMS



SPECIFICITIES

Electrolytic treatments are possible.
3 years guarantee.

COLORS



BUBBLE TRIM

OPTICAL

Luminous flux according to Bining : 1500/1200 lumens.
Colour temperature : 2700 K to 4000 K (on 2 to 3 Macadam steps).
Service Range : 70 % of nominal flux after 50 000 hours.
Colour Rendering Index : CRI 90.
PMMA acrylic lens, efficiency ~90 %.
Interchangeable lens.
Available degrees : 10°, 15°, 25°, 35° and ELL.

ELECTRICAL

Constant current supply : 1.2A.
Supply connection : Polarised output connectors.
Power consumption to 15W max.
Electrical Classification : Class III SELV device.

MECHANICAL

Dimensions : Diameter 96mm,
Height excluding mounting system 98.50mm.
Material : Aluminium (spot) and Steel (dome)
Type of mounting : recessed
Operating temperature : -5° +40°.
ROHS components.
Interior use only.

NORMS



SPECIFICITIES

3 years guarantee.

COLORS





INSERT 1

OPTICAL

Luminous flux according to Bining : 300/250 lumens.
Colour temperature : 2400 K to 5000 K.
Service Range : 70 % of nominal flux after 25 000 hours.
Colour Rendering Index : CRI 80 or CRI 90.
PMMA acrylic lens, efficiency ~90 %.
Available degrees : 10°, 18°, 28°, 40° et ELL.

ELECTRICAL

Constant current supply : 700 mA.
Supply connection : Polarised output connectors.
Power consumption to 2W max.
Electrical Classification : Class III SELV device.

MECHANICAL

Dimensions : Diameter 50 mm,
Overall Height 28 mm.
Adjustable to a total angle of 40°.
Operating temperature : -5° +40°.
ROHS components.
Interior use only.

NORMS



SPECIFICITIES

Electrolytic treatments are possible.
3 years guarantee.

COLORS



BUBBLE
TRIMLESS

OPTICAL

Luminous flux according to Bining : 1500/1200 lumens.
Colour temperature : 2700 K to 4000 K (on 2 to 3 Macadam steps).
Service Range : 70 % of nominal flux after 50 000 hours.
Colour Rendering Index : CRI 90.
PMMA acrylic lens, efficiency ~90 %.
Interchangeable lens.
Available degrees : 10°, 15°, 25°, 35° and ELL.

ELECTRICAL

Constant current supply : 1.2A.
Supply connection : Polarised output connectors.
Power consumption to 15W max.
Electrical Classification : Class III SELV device.

MECHANICAL

Dimensions : Diameter 96mm,
Height excluding mounting system 98.50mm.
Material : Aluminium (spot) and Steel (dome)
Type of mounting : recessed
Operating temperature : -5° +40°.
ROHS components.
Interior use only.

NORMS



SPECIFICITIES

3 years guarantee.

COLORS



rea



SPOT D10
RCA

OPTICAL

FRAMER
Luminous flux according to Bining: variable focal length
Adjustable focus : 10° à 35°
INTERCHANGEABLES LENSES
Luminous flux according to Bining : up to 5000cd
Degrees: 10°, 15°, 40° et ELL
ZOOM
Luminous flux according to Bining : 3000 to 15000 cd max
Adjustable focus : 8° to 30°

Colour temperature: 2700 K to 4000 K
Service Range: 70 % of nominal flux after 50 000 hours;
Colour Rendering Index : CRI 90, CRI 95 (on demand).

MECHANICAL

FRAMER
GOBO and filter holder

Diameter of spot : 50mm.
Articulated joint
Operating temperature: -5° +40°;
ROHS components;
Interior use only.

ELECTRICAL

900mA constant current supply.
Luminaire electrical power up to 10W.

NORMS



SPECIFICITIES

Electrolytic treatment available.
3 years guarantee.

COLORS



SPOT D15
RCA

OPTICAL

Luminous flux according to Bining: 1500/1200 lumens
Colour temperature: 2700K to 4000K (on 2 à 3 Macadam step);
Service Range: 70 % of nominal flux after 50 000 hours;
Colour Rendering Index: CRI 90.
PMMA acrylic lens, efficiency ~90 %.
Interchangeable lens.
Available degrees: 10°, 15°, 25°, 35° et ELL.

ELECTRICAL

Constant supply 1.2A;
RCA plug
Reversible polarity and hot plug;
Power consumption to 15W max.
Electrical classification: Class III SELV device

MECHANICAL

Spot : diameter 55mm.
Operating temperature: -5° +40°;
ROHS components;
Interior use only.

NORMS



SPECIFICITIES

Electrolytic treatments are possible.
3 years guarantee.

COLORS





**SPOT D12
RCA**

OPTICAL

Luminous flux according to Bining: 1200/1000 lumens
Colour temperature: 2700 K to 4000 K (2 at 3 Macadam step);
Service Range: 70 % of nominal flux after 50 000 hours;
Colour Rendering Index: CRI 90.
PMMA acrylic lens, efficiency ~90 %.
Interchangeable lens.
Available degrees: 15°, 25°, 40°, 50° et ELL.

ELECTRICAL

Constant supply voltage 1A;
RCA plug
Reversible polarity and hot plug;
Power consumption to 12W max.
Electrical classification: Class III SELV device.

MECHANICAL

Spot : diameter 45mm.
Operating temperature: -5° +40°;
ROHS components;
Interior use only.

NORMS



SPECIFICITIES

Electrolytic treatment available;
3 years guarantee.

COLORS



**SPOT D8
RCA**

OPTICAL

Luminous flux according to Bining: 800/600 lumens
Colour temperature: 2700 K to 4000 K (2 at 3 Macadam step);
Service Range: 70 % of nominal flux after 50 000 hours;
Colour Rendering Index: CRI 90
PMMA acrylic lens, efficiency ~90 %.
Interchangeable lens.
Available degrees: 15°, 25°, 40°, 50° et ELL.

ELECTRICAL

Constant supply voltage 700mA;
RCA plug
Reversible polarity and hot plug;
Power consumption to 8W max.
Electrical classification: Class III SELV device.

MECHANICAL

Spot : diameter 45mm.
Operating temperature: -5° +40°;
ROHS components;
Interior use only.

NORMS



SPECIFICITIES

Electrolytic treatments are possible.
3 years guarantee.

COLORS





**MAST 1C
RCA**

OPTICAL

Luminous flux according to Bining: : 200/180 lumens
Colour temperature: : 2400K to 5000K;
Service Range: 70 % of nominal flux after 50 000 hours;
Colour Rendering Index : CRI 90, CRI 95 (on demand).
PMMA acrylic lens, efficiency ~90 %.
Available degrees: 16° , 24° , 40° & ELL

ELECTRICAL

Constant supply 500mA;
RCA plug
Reversible polarity and hot plug;
Power consumption to 1.5W max.
Electrical classification: Class III SELV device

MECHANICAL

Spot : diameter 15mm ; Mast: 6mm diameter, custom height on request (max 600mm);
Orientation by patented magnetic ball joint;
Mounting integrated to the support or “Cover” mounting to be put on the support;
Operating temperature: -5° +40°;
ROHS components;
Interior use only.

NORMS



SPECIFICITIES

Electrolytic treatment available;
3 years guarantee.

COLORS



**MAST 2C
RCA**

OPTICAL

Luminous flux according to Bining: : 200/180 lumens
Colour temperature: : 2400K to 5000K;
Service Range: 70 % of nominal flux after 50 000 hours;
Colour Rendering Index : CRI 90, CRI 95 (on demand).
PMMA acrylic lens, efficiency ~90 %.
Available degrees: 16° , 24° , 40° & ELL

ELECTRICAL

Constant supply 500mA;
RCA plug
Reversible polarity and hot plug;
Power consumption to 3W max.
Electrical classification: Class III SELV device

MECHANICAL

Spot : diameter 15mm ; Mast: 6mm diameter, custom height on request (max 600mm);
Orientation by patented magnetic ball joint;
Mounting integrated to the support or “Cover” mounting to be put on the support;
Operating temperature: -5° +40°;
ROHS components;
Interior use only.

NORMS



SPECIFICITIES

Electrolytic treatments are possible.
3 years guarantee.

COLORS





MAST 3C
RCA

OPTICAL

Luminous flux according to Bining: : 200/180 lumens
Colour temperature: : 2400K to 5000K;
Service Range: 70 % of nominal flux after 50 000 hours;
Colour Rendering Index : CRI 90, CRI 95 (on demand).
PMMA acrylic lens, efficiency ~90 %.
Available degrees: 16° , 24° , 40° & ELL

ELECTRICAL

Constant supply 500mA;
RCA plug
Reversible polarity and hot plug;
Power consumption to 4.5W max.
Electrical classification: Class III SELV device

MECHANICAL

Spot : diameter 15mm ; Mast: 6mm diameter, custom height on request (max 600mm);
Orientation by patented magnetic ball joint;
Mounting integrated to the support or “Cover” mounting to be put on the support;
Operating temperature: -5° +40°;
ROHS components;
Interior use only.

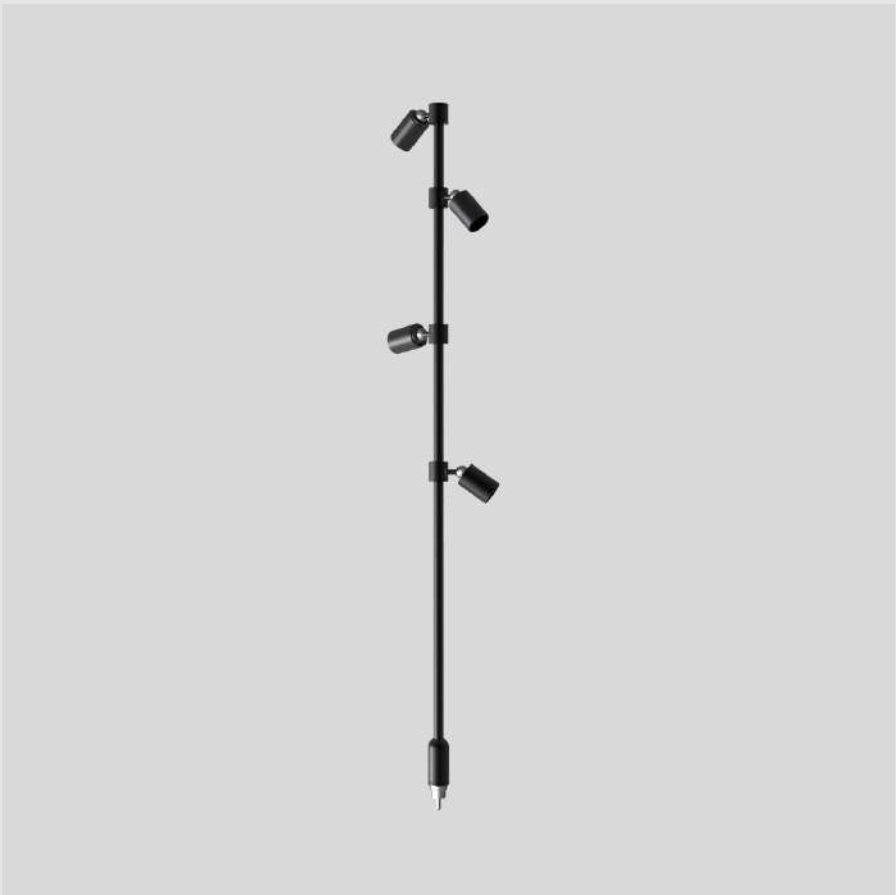
NORMS



SPECIFICITIES

Electrolytic treatment available;
3 years guarantee.

COLORS



MAST 4C
RCA

OPTICAL

Luminous flux according to Bining: : 200/180 lumens
Colour temperature: : 2400K to 5000K;
Service Range: 70 % of nominal flux after 50 000 hours;
Colour Rendering Index : CRI 90, CRI 95 (on demand).
PMMA acrylic lens, efficiency ~90 %.
Available degrees: 16° , 24° , 40° & ELL

ELECTRICAL

Constant supply 500mA;
RCA plug
Reversible polarity and hot plug;
Power consumption to 6W max.
Electrical classification: Class III SELV device

MECHANICAL

Spot : diameter 15mm ; Mast: 6mm diameter, custom height on request (max 600mm);
Orientation by patented magnetic ball joint;
Mounting integrated to the support or “Cover” mounting to be put on the support;
Operating temperature: -5° +40°;
ROHS components;
Interior use only.

NORMS



SPECIFICITIES

Electrolytic treatments are possible.
3 years guarantee.

COLORS





MAST 1C-2 RCA

OPTICAL

Luminous flux according to Bining : 200/180 lumens
Colour temperature : 2400K to 5000K;
Service Range: 70 % of nominal flux after 50 000 hours;
Colour Rendering Index : CRI 90, CRI 95 (on demand).
PMMA acrylic lens, efficiency ~90 %.
Available degrees: 16°, 24°, 40° & ELL

ELECTRICAL

Constant supply 500mA;
RCA plug
Reversible polarity and hot plug;
Power consumption to 3W max.
Electrical classification: Class III SELV device

MECHANICAL

Spot : diameter 15mm ; Mast: 6mm diameter, custom height on request (max 600mm);
Orientation by patented magnetic ball joint;
Mounting integrated to the support or "Cover" mounting to be put on the support;
Operating temperature: -5° +40°;
ROHS components;
Interior use only.

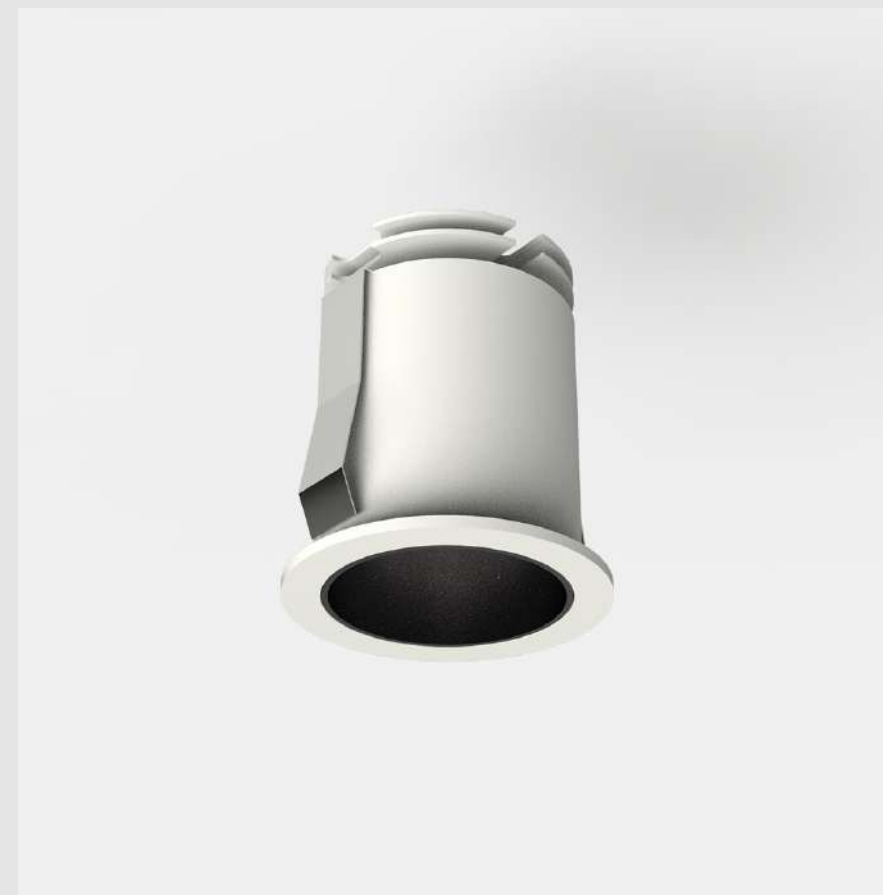
NORMS



SPECIFICITIES

Electrolytic treatment available;
3 years guarantee.

COLORS



INSERT 12

OPTICAL

Luminous flux according to Bining : 1200/1000 lumens.
Colour temperature : 2700 K to 4000 K (2 to 3 Macadam step).
Service Range : 70 % of nominal flux after 50 000 hours.
Colour Rendering Index : CRI 90.
PMMA acrylic lens, efficiency ~90 %.
Interchangeable lens.
Available degrees : 15°, 25°, 40°, 50° and ELL.

ELECTRICAL

Constant current supply : 1A.
Supply connection : Polarised output connectors.
Power consumption to 12W max.
Electrical Classification : Class III SELV device.

MECHANICAL

Spot : diameter 55mm ; Height excluding mounting system: 62,7mm.
Operating temperature : -5° +40°.
ROHS components.
Interior use only.

NORMS



SPECIFICITIES

Electrolytic treatments are possible.
3 years guarantee.

COLORS





INSERT 10 CONFORT

OPTICAL

Luminous flux according to Bining : 800/600 lumens.
Colour temperature : 2700 K to 4000 K (2 at 3 Macadam step).
Service Range : 70 % of nominal flux after 50 000 hours.
Colour Rendering Index : CRI 90.
PMMA acrylic lens, efficiency ~90 %.
Available degrees : 15°, 25°, 40°, 50° et ELL.

ELECTRICAL

Constant current supply : 0,7A.
Supply connection : Polarised output connectors.
Power consumption to 8W max.
Electrical Classification : Class III SELV device.

MECHANICAL

Dimensions : Diameter 50mm,
Height excluding mounting system 64,6mm.
Operating temperature : -5° +40°.
ROHS components.
Interior use only.

NORMS



SPECIFICITIES

Electrolytic treatment available.
3 years guarantee.

COLORS



linear



LINE 300

OPTICAL

Luminous flux according to Bining : 2300 lumens by meter.
Colour temperature : from 2000 K to 5000 K;
Service Range : 70 % of nominal flux after 50000 hours;
Colour Rendering Index : CRI 90.
Lenticular filter for profile. Transmission > 90%;
Beam Angle : 115°.

ELECTRICAL

Power Supply Line 300 : Constant voltage 24V;
Supply Connectors : Wire outlet section 0,5mm²/ AWG20,
200 cm, polarised, pre-stripped;
Power Output : 24 W per meter;
Electrical Classification : Class III SELV device.

MECHANICAL

Diameter 14mm
Operating temperature : – 5° + 40°;
Lengths by multiples of 10cm + 2cm;
Delivered with Aluminum profile (including end caps -2 x 2 mm thick, filter & mounting clips);
Adjustable profile with a total angle of 40° or 180° (depending on the mounting clip);
ROHS components;
Inside use only.

NORMS



SPECIFICITIES

3 years guarantee.

COLORS



LINE 240

OPTICAL

Luminous flux according to Bining : 1900 lumens by meter.
Colour temperature : from 2000 K to 5000 K;
Service Range : 70 % of nominal flux after 50000 hours;
Colour Rendering Index : CRI 90.
Lenticular filter for profile. Transmission > 90%;
Beam Angle : 115°.

ELECTRICAL

Power Supply Line 300 : Constant voltage 24V;
Supply Connectors : Wire outlet section 0,5mm²/ AWG20,
200 cm, polarised, pre-stripped;
Power Output : 20 W per meter;
Electrical Classification : Class III SELV device.

MECHANICAL

Operating temperature : – 5° + 40°;
Lengths by multiples of 10cm + 2cm;
Delivered with Aluminum profile (including end caps -2 x 2 mm thick, filter & mounting clips);
Adjustable profile with a total angle of 40° or 180° (depending on the mounting clip);
ROHS components;
Inside use only.

NORMS



SPECIFICITIES

3 years guarantee.

COLORS





LINE KS2740
TUNABLE
WHITE

OPTICAL

Luminous flux according to Bining : 2300 lumens by meter.
Colour temperature : from 2000 K to 5000 K;
Service Range : 70 % of nominal flux after 50000 hours;
Colour Rendering Index : CRI 90.
Lenticular filter for profile. Transmission > 90%;
Beam Angle : 115°.

ELECTRICAL

Power Supply Line : Constant voltage 24V.
Supply Connectors : Wire outlet section 0,5mm²/ AWG20,
200 cm, polarised, pre-stripped;
Power Output : 30W per meter;
Electrical Classification : Class III SELV device.

MECHANICAL

Diameter 14mm
Operating temperature : – 5° + 40°;
Lengths by multiples of 20cm + 2cm;
Delivered with Aluminum profile (including end caps -2 x 2 mm thick, filter & mounting clips);
Adjustable profile with a total angle of 40° or 180° (depending on the mounting clip);
ROHS components;
Inside use only.



SPECIFICITIES

3 years guarantee.

COLORS



LINE
MICRO

OPTICAL

Luminous flux according to Bining : 3000 lumens by meter;
Colour temperature : from 2400 K to 5000 K;
Service Range : 70 % of nominal flux after 25000 hours;
Colour Rendering Index : CRI 90.
PMMA acrylic lens, efficiency ~90 %. Interchangeable lens.
Available degrees : 16° , 24° , 40° & Elliptic.

ELECTRICAL

Power Supply Line Micro : Constant voltage 24V.
Supply Connectors : Wire outlet section 0,5mm²/ AWG20,
200 cm, polarised, pre-stripped;
Power Output : 30 W per meter;
Electrical Classification : Class III SELV device.

MECHANICAL

Section : 14 x 9 mm
Operating temperature : – 5° + 40°;
Delivered with Aluminum profile (including end caps -2 x 2 mm thick, filter & mounting clips);
Adjustable profile with a total angle of 40° or 180° (depending on the mounting clip);
ROHS components;
Inside use only.

NORMS



SPECIFICITIES

3 years guarantee.

COLORS





LINE
P36

OPTICAL

Luminous flux according to Bining : 2800 lumens by meter;
Colour temperature : from 2700 K to 5000 K;
Service Range : 70 % of nominal flux after 30000 hours;
Colour Rendering Index : CRI 90.
Lenticular filter for profile. Transmission > 90%;
Beam Angle : 110°.

ELECTRICAL

Power Supply Line P36 : Constant voltage 24V.
Supply Connectors : Wire outlet section 0,5mm²/ AWG20,
200 cm, polarised, pre-stripped;
Power Output : 30W to 45W per meter;
Electrical Classification : Class III SELV device.

MECHANICAL

Operating temperature : – 5° + 40°;
Available lengths : 55.5cm, 100.5cm, 153cm & 205.5cm;
Integrated in a 36*37mm aluminum profile;
Fixing type : Fixed, adjustable or suspended;
ROHS components;
Inside use only.

NORMS



SPECIFICITIES

3 years guarantee.

COLORS



LINE
021

OPTICAL

Luminous flux according to Bining : 4500 lumens by meter;
Colour temperature : from 2400 K to 5000 K;
Service Range : 70 % of nominal flux after 25000 hours;
Colour Rendering Index : CRI 90.
PMMA acrylic lens, efficiency ~90 %. Interchangeable lens.
Available degrees : 10° , 18° , 28° , 40° & Elliptic.

ELECTRICAL

Power Supply Line 021 : Constant voltage 24V.
Supply Connectors : Wire outlet section 0,5mm²/ AWG20,
200 cm, polarised, pre-stripped;
Power Output : 51 W per meter;
Electrical Classification : Class III SELV device.

MECHANICAL

Operating temperature : – 5° + 40°;
Available lengths : 36cm, 70cm, 103cm, 136cm, 170cm,
203cm;
Integrated in a 36*37mm aluminum profile;
Fixing type : Fixed, adjustable or suspended;
ROHS components;
Inside use only.

NORMS



SPECIFICITIES

3 years guarantee.

COLORS





LINE 200
THIN
STRAIGHT
PROFILE

OPTICAL

Luminous flux according to Bining : 2000 lumens by meter;
Colour temperature : from 2000 K to 5000 K;
Service Range : 70 % of nominal flux after 25 000 hours;
Colour Rendering Index : CRI 90.
Lenticular filter for profile. Transmission > 90%;
Beam Angle : 115°.

ELECTRICAL

Power Supply Line 200 : Constant voltage 24V.
Supply Connectors : Wire outlet section 0,5mm²/ AWG20,
200 cm, polarised, pre-stripped;
Power Output : 21 W per meter;
Electrical Classification : Class III SELV device.

MECHANICAL

Operating temperature : – 5° + 40°;
Lengths by multiples of 3.5cm from a first module of 5cm;
Straight aluminium profile ;
ROHS components;
Inside use only.

NORMS



SPECIFICITIES

3 years guarantee.

COLORS



LINE 200
THIN
CORNER
PROFILE

OPTICAL

Luminous flux according to Bining : 2000 lumens by meter;
Colour temperature : from 2000 K to 5000 K;
Service Range : 70 % of nominal flux after 25 000 hours;
Colour Rendering Index : CRI 90.
Lenticular filter for profile. Transmission > 90%;
Beam Angle : 115°.

ELECTRICAL

Power Supply Line 200 : Constant voltage 24V.
Supply Connectors : Wire outlet section 0,5mm²/ AWG20,
200 cm, polarised, pre-stripped;
Power Output : 21 W per meter;
Electrical Classification : Class III SELV device.

MECHANICAL

Operating temperature : – 5° + 40°;
Lengths by multiples of 3.5cm from a first module of 5cm;
Corner aluminium profile ;
ROHS components;
Inside use only.

NORMS



SPECIFICITIES

3 years guarantee.

COLORS





loupi-lighting.fr