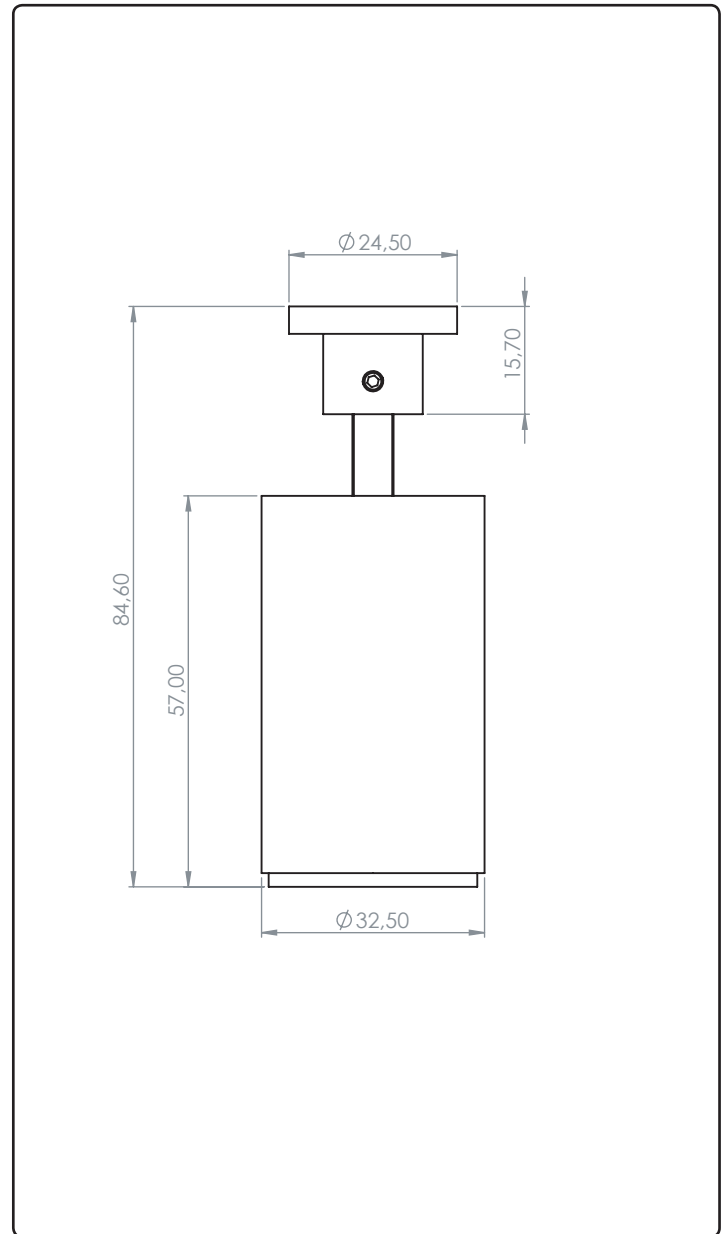


Spot D long

REF : SD01L55

SPOT EN



↓ PRODUCT DESCRIPTION

This model is part of the D range and is inspired by the D spotlight. However, it stands out with an elongated design, allowing for increased power and superior performance.

↓ OUTPUT (PEG)

6W

↓ OUTPUT (TRACK, RCA)

8W

↓ CRI

IRC97

↓ USE



↓ IP

IP 40

↓ POWER SUPPLY (PEG)

1.2A

↓ LUMENS

500lm

↓ DEGREES

10°

18°

28°

40°

ELL

↓ POWER SUPPLY (TRACK, RCA)

24V

↓ DIMMING

1-10V

0-10V

CASAMBI

DMX

↓ COLOUR TEMPERATURE

2400K

2700K

3000K

3500K

4000K

5000K

↓ STANDARDS COMPLIANCE

EN 62471

EN 60598-1

EN 60598-2

CE

III

ETL

↓ COLOURS

BK

WH

CUSTOM

↓ SOURCES

- Luminous flux according to Bining: 500lumens
- Colour temperature : de 2400K to 5000K
- Service Range: 70 % of nominal flux after 50 000 hours
- Colour Rendering Index: CRI 97

↓ OPTICAL

- PMMA acrylic lens, efficiency ~90%
- Degrees : 10°, 18°, 28°, 40° and Elliptic

↓ ELECTRICAL (on peg)

- Power supply 1.2A
- Reversible polarity and hot plug
- Power consumption to 6W max, excluding supply
- Electrical Classification : Class III SELV device

↓ ELECTRICAL (on tracks or RCA)

- Power supply 24V
- Electric transmission by magnetic contact
- Reversible polarity and hot plug
- Power consumption to 8W max, excluding supply
- Electrical Classification : Class III SELV device

↓ MECHANICAL

- Electronic circuit encased in a fire-proof polycarbonate housin
- Fixing by magnetic contact (on track)
- Operating temperature : -5° +40°
- Articulating base
- ROHS components
- Interior use only

↓ SPECIFICITIES

- 3 years guarantee

↓ SPOT NOMENCLATURE

Product Ref.	SD01L55		
Product specification	Simple peg	A	
	RCA	ARCA	
	Piccolo track	P	
	Slim track magnet	SMA	
Colour	Black	BK	
	White	WH	
	Custom	CU	
Temperature	2400K		24
	2700K		27
	3000K		30
	3500K		35
	4000K		40
	5000K		50
Degrees	10°		10
	18°		18
	28°		28
	40°		40
	Elliptic		ELL
REFERENCE	SD01L55	A	BK 24 10

↓ MOUNTING NOMENCLATURE

Mounting spec.	Mounting recessed Ø43	ACSFIPATER43	ENCC
	Mounting recessed Ø60	ACSFIPATER60	ENCAC
	Mounting ceiling Ø50	ACSFIPATER50	APPC
	Mounting ceiling X1spot	ACSFIPA1704030	AP1C
	Mounting ceiling X2spot	ACSFIPA1704030	AP2C
Colour	Black		BK
	White		WH
	Custom		CU
REFERENCE		ACSFIPATER43	BK ENCC

↓ RCA TRIM NOMENCLATURE

Product reference		ACSDRCA	APPC
Colour	Black		BK
	White		WH
	Custom		CU
REFERENCE		ACSDRCA	BK APPC

↓ NOMENCLATURES PATERE RCA TRIMLESS

Référence produit	ACSDRCAENCC
-------------------	-------------

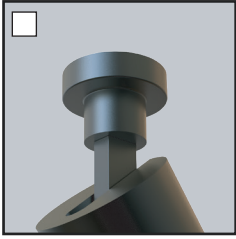
Spot D long

MOUNTING CONFIG.

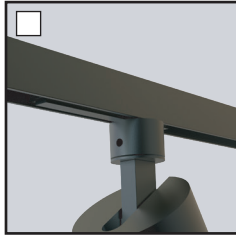
REF : SD01L55

SPOT EN

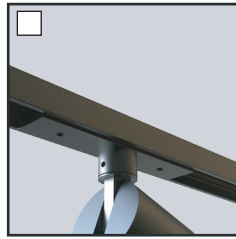
↓ MOUNTING CONFIGURATION



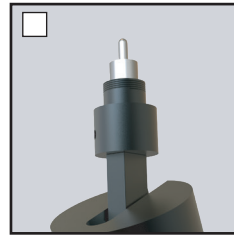
SD01L55A
Simple peg $\varnothing 24.5\text{mm}$



SD01L55S
Slim track Width 13mm

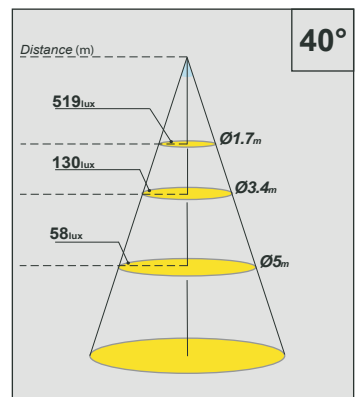
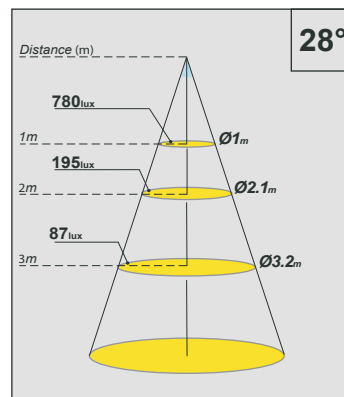
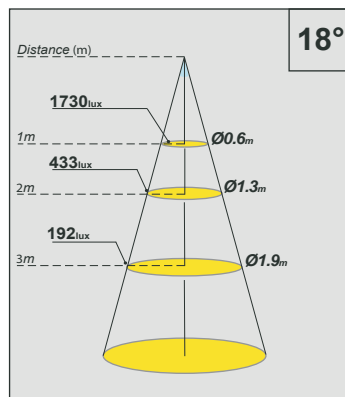
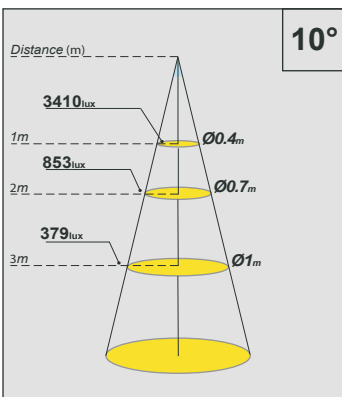


SD01L55P
Piccolo track Width 27mm



SD01L55RCA
RCA

↓ Beam angle



Spot D long

ORDER REFERENCE

REF : SD01L55

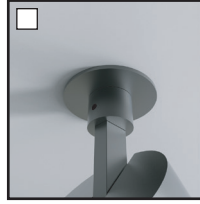
SPOT EN

ORDER REFERENCE (MOUNTING NOMENCLATURE)



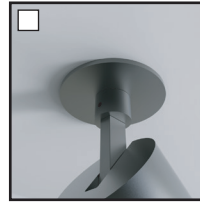
SD01L55-A-BK-24
Spot D long - Peg -
Black(BK) - 2400K(24).

+



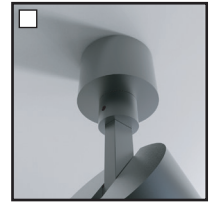
ACSFIPATER43XXENCC
Fixing mounting recessed
Ø43mm H34mm

or



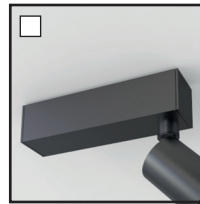
ACSFIPATER60XXENCAC
Fixing mounting recessed
Ø60mm H34mm

or



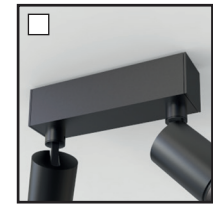
ACSFIPATER50XXAPPC
Fixing mounting ceiling
Ø50mm H30mm

or



ACSFIPA1704030XXAP1C
Fixing mounting ceiling
(driver in)
x1 spot : 170x40x30mm

or



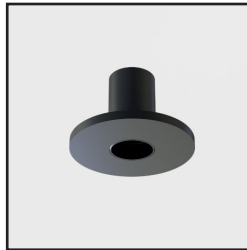
ACSFIPA1704030WHAP2C
Fixing mounting ceiling
(driver in)
x2 spots : 170x40x30mm

ORDER REFERENCE (RCA TRIM NOMENCLATURE)



SD01L55-ARCA-BK-24
Spot D long - RCA -
Black(BK) - 2400K(24).

+



ACSDRCABKAPPC
Mounting RCA trim - Black(BK)
(Ø50mm)

=

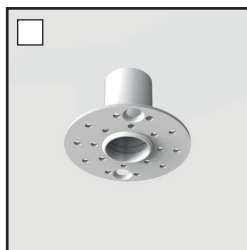


ORDER REFERENCE (RCA TRIMLESS NOMENCLATURE)



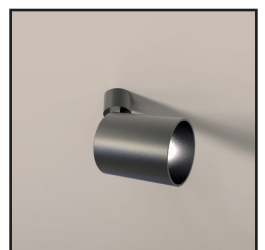
SD01L55-ARCA-BK-24
Spot D long - RCA -
Black(BK) - 2400K(24).

+



ACSDRCAENCC
Mounting RCA trimless

=



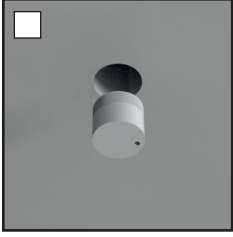
Spot D long

ACCESSORIES

REF : SD01L55

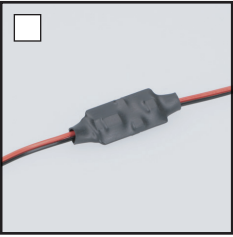
SPOT EN

↓ RCA ACCESSORIES



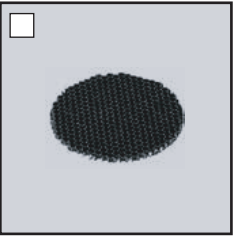
ACSDRCABOUCHONXXC
Finishing cap for RCA trim &
trimless mounting

↓ POWER SUPPLY CONNECTORS



ACSD01L55COCIRCPXX500
Piccolo circuit with sheath
heat-shrinkable

↓ OPTICAL ACCESSORIES



ACSC001OPNIDABBKD28C
Honeycomb Ø28mm